

Distribution Board, Enclosure System & Electrical Products

Edition 4



eureka
www.eurekaelectrical.com.au

Developed and
Manufactured in Australia

Distribution Board & Enclosure System



The Eureka Distribution Board & Enclosure System has been designed and manufactured in Australia to suit Australian standards & conditions.

In N42 Grey & X15 Orange, the range can be used as a standard 250A or 400A off the shelf distribution board, or a versatile enclosure system to help build up most switchboard assemblies up to 800A.

A wide range of electrical accessories help to compliment the range as well.

Eureka Distribution Boards : Page 3-5



- 12 - 96 Pole
- 250A Budget Distribution Board Range
- IP42 or IP56
- 250A and 400A Options
- Non-auto or Moulded Case Circuit Breaker Main Switch
- N42 Storm Grey or X15 Orange
- Plinths and Rain Hoods Available



Eureka Enclosure System : Page 6-18

- 300mm - 2100mm Enclosure Options
- 200mm & 300mm Depth Options
- IP42 or IP56
- Form 2 Segregation Available
- Energy Management Metering Panelboards
- Circutor Multi Function Power Meters, Compact CTs and Mounting Kits
- DIN Mount Enclosures for Mounting Control Items
- Incoming Cable and Ventilation Enclosures
- Cable Zone Enclosures
- Cable Termination Enclosures
- Variety of Escutcheons Available



Electrical Accessories : Page 19-44

- CVS IP65 Metal Enclosures RAL7035 & X15
- Eureka Automatic Transfer Switches
- Eureka Multi-range Multi-voltage Timing Relays
- Eureka Miniature Circuit Breakers up to 125A
- Susol Moulded Circuit Breakers and Accessories to 630A
- Eureka Residual Current Circuit Breakers and RCDs
- MCB Encapsulated Chassis to 400A in 18/27 & Hybrid Varieties to IEC-61439-2
- Time Clocks and Emergency Light Test Kits
- MCCB Encapsulated Chassis to IEC-61439-2 800A
- Eureka Temporary Supply Switchboards
- Standard Frame and Lighting Contactors
- Relays, Transformers, Pilot Lights & Cam Switches
- Rishabh Current Transformers
- Plastic and Metal DIN Mount MCB Enclosures
- DIN Terminals up to 240mm²
- Slotted Cable Duct
- PLUS Much More!



Eureka Distribution Boards



The Eureka Distribution Board is available from 18 to 96 poles in IP42 or IP56, in N42 (Grey) or X15 (Orange). With 600mm standard width and a depth of 230mm, accessories can be easily fitted and wired.



The Eureka distribution board range is designed to include the Eureka range of MCBs. Eureka range of MCBs from 1A to 125A. Eureka RCBO units from 10A to 63A in 1 and 3 Pole can be fitted to either a 250A or 400A standard or hybrid chassis. For project pricing and drawings for construction approval, we are able to help provide a solution for your distribution board requirements. A comprehensive selectivity and discrimination software package is available to help with circuit breaker selection in the power distribution system. Distribution boards can be supplied fitted and wired to your needs.

Features include -

- 1.6mm steel welded door, 1.6mm cabinet and 1.2mm escutcheon
- From 12 to 96 pole with 250A or 400A non-auto or MCCB main switch as standard
- Encapsulated chassis rating 250A @ 25kA for 0.1sec, 400A @ 30kA for 0.1sec
- IP 42 or IP 56 in Grey (N42) or Orange (X15)
- Easy adaption of multi function power meters & compact CTs
- Plinth kits and rainhoods available
- Complete with schedule holder and circuit identification card
- Hinged escutcheons
- Supplied with 50% spare pole fillers on the escutcheon
- Continuous smoke seal on door
- Stiffeners on all escutcheons
- E&N Bars 250A and 400A, 2 x 8mm main studs with 2 x 35mm tunnel terminals
- Lockable handle with CL001 key (3-point locking in weatherproof versions)
- Earthing Studs on door and escutcheon
- Can be fitted with hybrid or 27mm pitch chassis
- Can be fitted with 250A or 400A chassis
- All escutcheons supplied as gloss white
- Special escutcheons can be made to order



Notes : All distribution boards are supplied with: 3 pole 250A or 400A chassis (18mm pitch), Main switches to suit Amp rating, 250A or 400A earth and neutral bars, 50% pole fillers on the escutcheon, IP42 smoke seal rubber fitted on door, IP56 models with weatherproof return to suit the door seal, hinged escutcheons, schedule holder and circuit designation label.



EUR-MDB60G

IP42 Distribution Boards with 250A Non-auto Main Switch

Part no. N42 grey	Part no. X15 orange	No. of poles	Height	Width	Depth
EUR-MDB12G	EUR-MDB12OR	12	750	600	230
EUR-MDB18G	EUR-MDB18OR	18	750	600	230
EUR-MDB24G	EUR-MDB24OR	24	750	600	230
EUR-MDB30G	EUR-MDB30OR	30	900	600	230
EUR-MDB36G	EUR-MDB36OR	36	900	600	230
EUR-MDB42G	EUR-MDB42OR	42	900	600	230
EUR-MDB48G	EUR-MDB48OR	48	1050	600	230
EUR-MDB60G	EUR-MDB60OR	60	1050	600	230
EUR-MDB72G	EUR-MDB72OR	72	1200	600	230
EUR-MDB84G	EUR-MDB84OR	84	1500	600	230
EUR-MDB96G	EUR-MDB96OR	96	1500	600	230



EUR-MDB36G2MC

IP42 Distribution Boards with 400A Non-auto Main Switch

Part no. N42 grey	Part no. X15 orange	No. of poles	Height	Width	Depth
EUR-MDB24G4NA	EUR-MDB24O4NA	24	1050	600	230
EUR-MDB36G4NA	EUR-MDB36O4NA	36	1050	600	230
EUR-MDB48G4NA	EUR-MDB48O4NA	48	1200	600	230
EUR-MDB60G4NA	EUR-MDB60O4NA	60	1200	600	230
EUR-MDB72G4NA	EUR-MDB72O4NA	72	1500	600	230
EUR-MDB84G4NA	EUR-MDB84O4NA	84	1500	600	230
EUR-MDB96G4NA	EUR-MDB96O4NA	96	1800	600	230

IP42 Distribution Boards with 250A MCCB Main Switch

Part no. N42 grey	Part no. X15 orange	No. of poles	Height	Width	Depth
EUR-MDB24G2MC	EUR-MDB24O2MC	24	1050	600	230
EUR-MDB36G2MC	EUR-MDB36O2MC	36	1050	600	230
EUR-MDB48G2MC	EUR-MDB48O2MC	48	1200	600	230
EUR-MDB60G2MC	EUR-MDB60O2MC	60	1200	600	230
EUR-MDB72G2MC	EUR-MDB72O2MC	72	1500	600	230
EUR-MDB84G2MC	EUR-MDB84O2MC	84	1500	600	230
EUR-MDB96G2MC	EUR-MDB96O2MC	96	1800	600	230



EUR-MDB36G4MC

IP42 Distribution Boards with 400A MCCB Main Switch

Part no. N42 grey	Part no. X15 orange	No. of poles	Height	Width	Depth
EUR-MDB24G4MC	EUR-MDB24O4MC	24	1050	600	230
EUR-MDB36G4MC	EUR-MDB36O4MC	36	1050	600	230
EUR-MDB48G4MC	EUR-MDB48O4MC	48	1200	600	230
EUR-MDB60G4MC	EUR-MDB60O4MC	60	1200	600	230
EUR-MDB72G4MC	EUR-MDB72O4MC	72	1500	600	230
EUR-MDB84G4MC	EUR-MDB84O4MC	84	1500	600	230
EUR-MDB96G4MC	EUR-MDB96O4MC	96	1800	600	230

IP56 & Economy IP40 Distribution Boards



IP56 Distribution Boards with 250A Non-auto Main Switch

Part no. N42 grey	Part no. X15 orange	No. of poles	Height	Width	Depth
EUR-MDB12G/WP	EUR-MDB12OR/WP	12	750	600	230
EUR-MDB18G/WP	EUR-MDB18OR/WP	18	750	600	230
EUR-MDB24G/WP	EUR-MDB24OR/WP	24	750	600	230
EUR-MDB30G/WP	EUR-MDB30OR/WP	30	900	600	230
EUR-MDB36G/WP	EUR-MDB36OR/WP	36	900	600	230
EUR-MDB42G/WP	EUR-MDB42OR/WP	42	900	600	230
EUR-MDB48G/WP	EUR-MDB48OR/WP	48	1050	600	230
EUR-MDB60G/WP	EUR-MDB60OR/WP	60	1050	600	230
EUR-MDB72G/WP	EUR-MDB72OR/WP	72	1200	600	230
EUR-MDB84G/WP	EUR-MDB84OR/WP	84	1500	600	230
EUR-MDB96G/WP	EUR-MDB96OR/WP	96	1500	600	230



EUR-MDB60OR/WP

IP56 Distribution Boards with 400A Non-auto Main Switch

Part no. N42 grey	Part no. X15 orange	No. of poles	Height	Width	Depth
EUR-MDB24G4NAWP	EUR-MDB24O4NAWP	24	1050	600	230
EUR-MDB36G4NAWP	EUR-MDB36O4NAWP	36	1050	600	230
EUR-MDB48G4NAWP	EUR-MDB48O4NAWP	48	1200	600	230
EUR-MDB60G4NAWP	EUR-MDB60O4NAWP	60	1200	600	230
EUR-MDB72G4NAWP	EUR-MDB72O4NAWP	72	1500	600	230
EUR-MDB84G4NAWP	EUR-MDB84O4NAWP	84	1500	600	230
EUR-MDB96G4NAWP	EUR-MDB96O4NAWP	96	1800	600	230

IP56 Distribution Boards with 250A MCCB Main Switch

Part no. N42 grey	Part no. X15 orange	No. of poles	Height	Width	Depth
EUR-MDB24G2MCWP	EUR-MDB24O2MCWP	24	1050	600	230
EUR-MDB36G2MCWP	EUR-MDB36O2MCWP	36	1050	600	230
EUR-MDB48G2MCWP	EUR-MDB48O2MCWP	48	1200	600	230
EUR-MDB60G2MCWP	EUR-MDB60O2MCWP	60	1200	600	230
EUR-MDB72G2MCWP	EUR-MDB72O2MCWP	72	1500	600	230
EUR-MDB84G2MCWP	EUR-MDB84O2MCWP	84	1500	600	230
EUR-MDB96G2MCWP	EUR-MDB96O2MCWP	96	1800	600	230



EUR-LDB48G

IP56 Distribution Boards with 400A MCCB Main Switch

Part no. N42 grey	Part no. X15 orange	No. of poles	Height	Width	Depth
EUR-MDB24G4MCWP	EUR-MDB24O4MCWP	24	1050	600	230
EUR-MDB36G4MCWP	EUR-MDB36O4MCWP	36	1050	600	230
EUR-MDB48G4MCWP	EUR-MDB48O4MCWP	48	1200	600	230
EUR-MDB60G4MCWP	EUR-MDB60O4MCWP	60	1200	600	230
EUR-MDB72G4MCWP	EUR-MDB72O4MCWP	72	1500	600	230
EUR-MDB84G4MCWP	EUR-MDB84O4MCWP	84	1500	600	230
EUR-MDB96G4MCWP	EUR-MDB96O4MCWP	96	1800	600	230



EUR-LDB48G DOOR OPEN

Eureka LITE Economy IP40 Distribution Boards N42 Grey

Part no.	No. of Poles	Height	Width	Depth
EUR-LDB24G	24	950	450	150
EUR-LDB36G	36	950	450	150
EUR-LDB48G	48	1110	450	150
EUR-LDB60G	60	1110	450	150
EUR-LDBKL	Replacement key lock for Eureka LITE enclosure			

Eureka LITE DIN Mounted Components Enclosures N42 Grey

For mounting lighting control accessories and din mount products.
Complete with din rail, mounting brackets and escutcheons

Part no.	DIN rail Quantity	Height	Width	Depth
EUR-LCBB4G	4 x 19 poles	950	450	150
EUR-LCBB5G	5 x 19 poles	1100	450	150



EUR-LCBB5G DOOR OPEN

Eureka Enclosure System

The Eureka Enclosure System is a versatile range developed with the installer / workshop fitter in mind. Either as a power distribution system or mechanical services form 2 switchboard, the Eureka range caters to many needs.

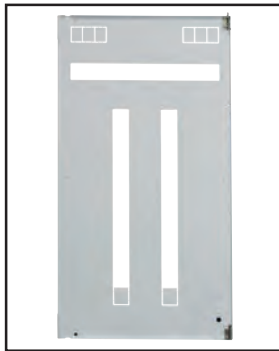
IP56 Rated Enclosures

All IP56 distribution boards & accessory enclosures are complete with rain gutters & weatherproof seals.



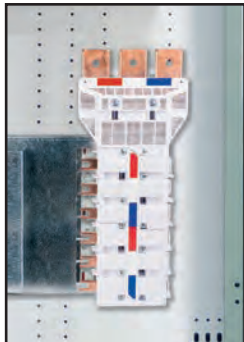
Escutcheons

Either in slotted, blank or C-bus style. Available in gloss white.



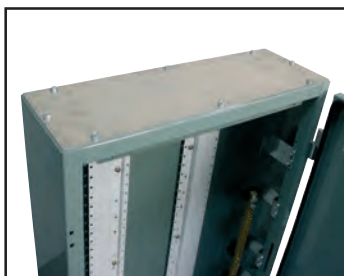
MCCB Chassis

800A MCCB single sided chassis can be easily added with the aid of mounting brackets to bring the chassis to the correct height of the escutcheon.



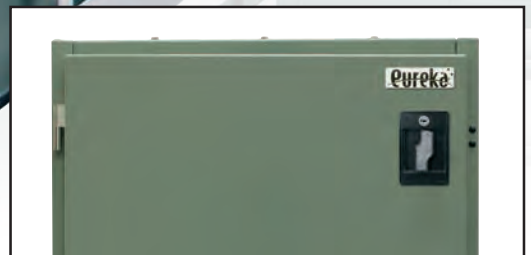
Accessory enclosures

C-bus or air-conditioning controllers or an option of blank enclosure with gear pans fitted from 300mm to 2100mm.



Top & bottom gland plates

Sealed for easy cable entry & exit 1 x 3mm aluminium, 1 x 1.6mm mild steel as standard.



Colour & IP ratings

Available in X15 (Orange) or N42 (Grey) and as IP42 or IP56

Enclosures

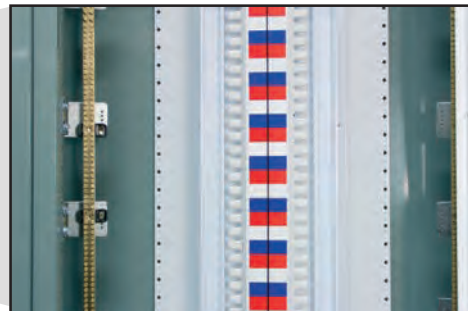
From 300mm to 2100mm H, 600mm W & 230mm or 300mm D

Cable Duct Mounting

Studs on rear of doors help with mounting of cable duct to keep wiring to components mounted on the door tidy

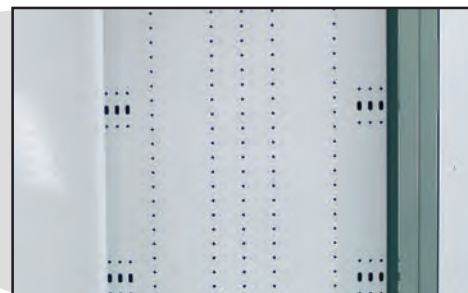
Main switch

250A or 400A Non-auto or MCCB with up to 20 poles of DIN rail for mounting accessories next to the main switch



Encapsulated chassis 250A (25ka / 0.1 sec) or 400A (30ka / 0.1 sec)

250A or 400A encapsulated chassis to 96 pole, or hybrid versions to 72 pole. Earth and Neutral bar assemblies 250A or 400A.



Gear pans

Pre-drilled with returns and in sizes from 150mm to 1950mm for mounting accessories, DIN rails, slotted duct or control devices, etc.

Accessories include:

- Rain hoods
- Extension collars
- Galvanised & steel plinth kits
- Flush mount kits
- Cable zones
- Cable termination enclosures
- Incoming cable / ventilation enclosures

Segregation kits

Available to help with form 2 applications or where a physical barrier is required within the enclosure. Complete with cable entry knockouts





AB03-G



AB07-G



AB07-WP-G



CBB15-08-OR

IP42 Accessory Module Enclosure

For mounting control components and building an enclosure system to suit a particular need. Complete with mounting rail studs fitted. Mounting rails need to be ordered separately.

Part no. N42 grey	Part no. X15 orange	Height	Width	Depth
AB03-G	AB03-OR	300	600	230
AB04-G	AB04-OR	450	600	230
AB06-G	AB06-OR	600	600	230
AB07-G	AB07-OR	750	600	230
AB09-G	AB09-OR	900	600	230
AB10-G	AB10-OR	1050	600	230
AB12-G	AB12-OR	1200	600	230
AB15-G	AB15-OR	1500	600	230
AB18-G	AB18-OR	1800	600	230
AB21-G	AB21-OR	2100	600	230

IP42 Accessory Module Enclosure 300mm Deep NEW

300mm of usable space behind the escutcheon.

Extra deep for helping to mount large contactors, 800A MCCB,s, variable speed drives or the Eureka 400/630 Automatic transfer switch. Also helps to mount deeper products to the escutcheon so not to interfere with enclosure mounted switchgear. Mounting rails need to be ordered separately.

Part no. N42 grey	Part no. X15 Orange	Height	Width	Depth
AB07-300-G	AB07-300-OR	700	600	330
AB09-300-G	AB09-300-OR	900	600	330
AB10-300-G	AB10-300-OR	1050	600	330
AB12-300-G	AB12-300-OR	1200	600	330
AB15-300-G	AB15-300-OR	1500	600	330
AB18-300-G	AB18-300-OR	1800	600	330
AB21-300-G	AB21-300-OR	2100	600	330
DB-RB-EUR300	Bracket to suit 300mm deep enclosures. Raises all components to correct height to meet the escutcheon			

IP56 Accessory Module Enclosure

For mounting control components and building an enclosure system to suit a particular need. Complete with Mounting Rail studs fitted. Mounting rails need to be ordered separately.

Part no. N42 grey	Part no. X15 orange	Height	Width	Depth
AB03-WP-G	AB03-WP-OR	300	600	230
AB04-WP-G	AB04-WP-OR	450	600	230
AB06-WP-G	AB06-WP-OR	600	600	230
AB07-WP-G	AB07-WP-OR	750	600	230
AB09-WP-G	AB09-WP-OR	900	600	230
AB10-WP-G	AB10-WP-OR	1050	600	230
AB12-WP-G	AB12-WP-OR	1200	600	230
AB15-WP-G	AB15-WP-OR	1500	600	230
AB18-WP-G	AB18-WP-OR	1800	600	230
AB21-WP-G	AB21-WP-OR	2100	600	230

Note : All Accessory Module Enclosures are not supplied with escutcheons.

IP42 DIN Mount Enclosure

For mounting lighting control accessories and din mount products. Complete with DIN rail, mounting brackets and escutcheon.

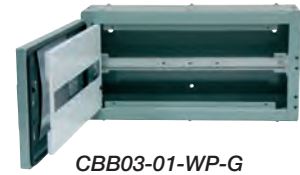
Part no. N42 grey	Part no. X15 orange	DIN rail Quantity.	Height	Width	Depth
CBB03-01-G	CBB03-01-OR	1 x 25 poles	300	600	230
CBB04-02-G	CBB04-02-OR	2 x 25 poles	450	600	230
CBB06-03-G	CBB06-03-OR	3 x 25 poles	600	600	230
CBB09-04-G	CBB09-04-OR	4 x 25 poles	900	600	230
CBB10-05-G	CBB10-05-OR	5 x 25 poles	1050	600	230
CBB12-06-G	CBB12-06-OR	6 x 25 poles	1200	600	230
CBB15-08-G	CBB15-08-OR	8 x 25 poles	1500	600	230
CBB18-09-G	CBB18-09-OR	9 x 25 poles	1800	600	230
CBB21-11-G	CBB21-11-OR	11 x 25 poles	2100	600	230

Metering Panelboards

IP56 DIN Mount Enclosure

For mounting lighting control accessories and din mount products. Complete with DIN rail, mounting brackets and escutcheon.

Part no. N42 grey	Part no. X15 orange	DIN rail Quantity	Height	Width	Depth
CBB03-01-WP-G	CBB03-01-WP-OR	1 x 25 poles	300	600	230
CBB04-02-WP-G	CBB04-02-WP-OR	2 x 25 poles	450	600	230
CBB06-03-WP-G	CBB06-03-WP-OR	3 x 25 poles	600	600	230
CBB09-04-WP-G	CBB09-04-WP-OR	4 x 25 poles	900	600	230
CBB10-05-WP-G	CBB10-05-WP-OR	5 x 25 poles	1050	600	230
CBB12-06-WP-G	CBB12-06-WP-OR	6 x 25 poles	1200	600	230
CBB15-08-WP-G	CBB15-08-WP-OR	8 x 25 poles	1500	600	230
CBB18-09-WP-G	CBB18-09-WP-OR	9 x 25 poles	1800	600	230
CBB21-11-WP-G	CBB21-11-WP-OR	11 x 25 poles	2100	600	230



CBB03-01-WP-G

Eureka Energy Metering Distribution Boards



- > Available in N42 (grey) and X15 (orange)
- > Suits Eureka MCB & RCBOs
- > Hinged escutcheon
- > IP40, IP42 or IP56
- > Compact and easy to install CT / Metering arrangement which allows the enclosure size required to be at least 25% smaller than similar products on the market.
- > Can accommodate multiple meters to suit multiple chassis arrangements



Separate light and power energy meters, Circutor mini type power analyser in either Modbus, BACnet or LonWorks communication.

Compact 250A main switch

Compact & versatile C.T. installation format allows for metering to be easily adapted to existing Eureka Panelboards

Individual protection for meters

Fully shrouded live parts IP2X

DIN mounting space up to 12 poles but can be expanded to 22 poles

Busbar and mains cable connection fully rated at 250A

Double screw Earth & Neutral bars

Split chassis for Light & Power

Duct for fast and neat installation

Please contact your distributor for pricing details.



Circutor Dual Protocol Multi Function Power Meters and Compact MC3 Current Transformers

Circutor Multi Function Power Meters and Compact Current Transformers are easily fitted to the Eureka distribution board and enclosure system with purpose made links and shrouds. The Circutor range of Multi function meters have been established in the Australian market for many years.

With features which include -

- » Modbus & Bacnet protocol available on the one meter
- » 52.5mm width & DIN mount. Can be mounted to the front panel with the addition of 72mm front adaptor
- » Class 0.5 operation
- » Nominal voltage 300Vac (Ph - N) 520Vac (Ph - Ph)
- » RS485 communication
- » 2 x transistor outputs
- » Consumption 3vA
- » Dimension - 52.5mm x 85mm x 67.9mm (3 modules)
- » Sealable

**IMPROVED
& EXPANDED
RANGE**



M55921

M56311



M56414



M818110041500



M73123



M73121



M5ZZF1

Please call your distributor for a detailed spec sheet which includes all technical data

Part no.	Description
M55911	CVM-C10-ITF-485 Circutor MFM 96x96mm Panel mount. Modbus protocol
M55921	CVM-C10-ITF-485 Circutor MFM 96x96mm Panel mount suits MC3-... 250mA Compact CT. Modbus protocol
M56011	CVM-B100-ITF-RS485-ICT2 Circutor MFM 96x96mm panel mount Comes standard with both Modbus and Bacnet protocols
M56111	CVM-B150-ITF-RS485-ICT2 Circutor MFM 144x144 mm panel mount Comes standard with both Modbus and Bacnet protocols
M55963	CVM-C10-FLEX-IN-485-I2 Circutor MFM 96x96mm panel mount suitable for use with Rogowski type CT coils only. Modbus/Bacnet protocol built in. Refer to the Flex -Mag type CT's
M56311	CVM-A1500-ITF-ICT2 Circutor MFM 144x144mm panel mount the ultimate power analyser, built in communications using Modbus and Bacnet protocols, inbuilt Energy Management System, internal Web Server (html5). Customised display screens are available. IO expansion cards available. Registers and monitors data and events.
M56414	CVM-E3-MINI-ITF-485-IC Circutor MFM din mount with Modbus and Bacnet protocol inbuilt suitable for use with standard 5A CT's. Slightly larger in length to the CVM-MINI this is the next generation model with high contrast backlit display.
M56424	CVM-E3-MINI-MC-485-IC Circutor MFM din mount with Modbus and Bacnet protocol inbuilt suitable for use with MC3 compact CT. Slightly larger in length to the CVM-MINI this is the next generation model with high contrast backlit display.
M5ZZF10000E3	72 x 72mm Panel mount adaptor to suit the CVM-E3 range

Flex-mag Rogowski Current Transformers

Part no.	Description
M818110041500	70mm diameter Rogowski CT sensor Max A - 2000 Sensor cable length is 2m
M818120041500	120mm diameter Rogowski CT sensor Max A - 2000 Sensor cable length is 2m

Compact Current Transformers & Panel Mount Accessories

Part no.	Description
M73123	MC3-250 Circutor 250A CT to suit CVM-MINI 250mA Secondary
M73122	MC3-125 Circutor 125A CT to suit CVM-MINI 250mA Secondary
M73121	MC3-63 Circutor 63A CT to suit CVM-MINI 250mA Secondary

Kilowatt Hour Meters & Metering Connection Kits

Kilowatt Hour Meters

CEM-C RANGE

The CEM-C range can also be used as power analysers and installed in facilities with or without direct connection, depending on the model chosen. Measuring voltage, active or reactive energy, power, pf it is a useful compact meter to help control and monitor power. Class 1 accuracy. With built in communications in some models.

Part no.	Description
Q25112	CEM-C5 1ph 50A direct connect kwh. 1 din module wide. Pulse output only. Max cable 10mm
Q26112	CEM-C6 1ph 100A direct connect mfpm. 1 din module wide. RS485 Modbus. Max cable 25mm
Q22332	CEM-C21 3ph 65A direct connect mfpm. 3 din modules wide RS485 Modbus. Max cable 25mm
Q23442	CEM-C31 3ph 5A/CT driven mfpm. 3 din modules wide. RS485 Modbus. Max cable 16mm
<i>1 module Kilowatt hour meter</i>	
M55511	CVM-1D-RS485-C 1 module wide 1ph 32A direct connect analogue KWH with Modbus



Q26112

Q22332



M55511

Metering Connection Tags and Shrouds / Mounting Kits

The Eureka range of Distribution boards have been adapted to fit a unique metering system which is easily fitted to existing or new Eureka distribution boards. The system can also be fitted to standalone EMS style or flat pan MCB chassis with the simple addition of numerous copper tags and shrouds. *This mounting system suits the Circutor CVM mini MFM and MC3 compact 250A CT.*

Part no.	Description
DB-METTAGS1	Copper Tags to suit from EUR-3-250 to EMS MCB chassis (set of 3)
DB-METTAGS2	Copper tags to suit EUR-3-250 to flat pan single and multiple split chassis (set of 3)
DB-MET SHROUD1	Top Shroud to suit EUR-3-250 to EMS MCB chassis
DB-MET SHROUD2	Bottom Shroud to suit EUR-3-250 to flat pan single and multiple split chassis
DB-MET SUPPORT1	Bakelite support to suit DB-METTAGS2
DB-MET SUPPORT2	Support to suit DB-MET SUPPORT1
GKU2W16-CT	CT disconnection terminal (set of 2)



GKU2W16-CT

The system is also available as a kit which includes all screws / washers etc for adapting the kit onto either the EMS MCB chassis or flat pan single and multiple chassis arrangement.

Single Chassis Metering Mounting Kit

(suits Eureka 250A EMS chassis)

Part no.	Description
DB-MET KIT1	CT mounting kit to suit EMS chassis metering

Comprises -

DB-MET SHROUD1

DB-METTAGS1

Includes all fixing screws and bolts / washers



DB-MET KIT1

Multiple Chassis Metering Mounting Kit

(suits Eureka 250A multiple chassis arrangement)

Part no.	Description
DB-MET KIT 2	CT mounting kit to suit flat pan single and multiple split chassis

Comprises -

DB-MET SHROUD1

DB-METTAGS1

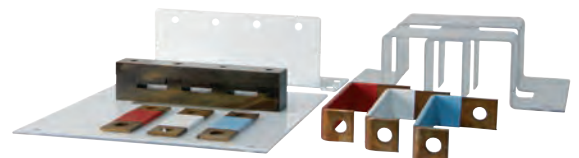
DB-MET SHROUD2

DB-METTAGS2

DB-MET SUPPORT1

DB-MET SUPPORT2

Includes all fixing screws and bolts / washers



DB-MET KIT2



**AB18-G SEGREGATED INTO:
TOP SECTION 1050
BOTTOM SECTION 750**

Segregation Format Table

This table depicts the different format options that can be created when using the removable segregation partition inside an AB accessory module enclosure. This option can be used in both the IP42 and IP56 accessory module enclosures.

Enclosure part no.	Enclosure height mm	Format options	
		Top section	Bottom section
AB10-...	1050	750	300
		300	750
AB12-...	1200	900	300
		750	450
		450	750
		300	900
AB15-...	1500	900	600
		750	750
		600	900
AB18-...	1800	1200	600
		1050	750
		900	900
		750	1050
		600	1200
AB21-...	2100	1500	600
		1200	900
		1050	1050
		900	1200
		600	1500

Segregation Barrier Kits

When used in conjunction with the segregation format table above, a segregation barrier can be formed inside an AB accessory enclosure. Compartments with separate escutcheons can be formed in both IP42 and IP56 AB accessory enclosures. Used when a form 2 physical barrier is required inside a AB accessory enclosure.

Segregation Bottom Piece

Part no.	Description
DB-RMUL6S-W	Gloss white
DB-RMUL6300-W	Gloss white. Suits 300mm deep enclosure.



DB-RMUL6S-W



DB-RMUL6-W

Escutcheon Segregation Top Piece

Used when mounting separate escutcheons inside an AB accessory enclosure. Gloss white.

When used in an IP42 AB accessory enclosure

Gloss White

DB-RMUL6-W

When used in an IP56 AB accessory enclosure

Gloss White

DB-RMUL6-WP-W

Switchboard Labels

Please enquire for custom made legend plates and switchboard labels. All custom labels come with double sided tape.



Mounting Rails, Cable Zones, Termination Enclosures & Extension Collars

AB Accessory Enclosure Mounting Rails

Used when mounting segregation barriers, gear pans, chassis, mounting brackets & top hats within the AB Accessory Enclosure. (2 required per enclosure).

Part no.	Description	Length
EUMDBRAIL300	Enclosure mounting rail gloss white to suit AB03	300
EUMDBRAIL450	Enclosure mounting rail gloss white to suit AB04	450
EUMDBRAIL600	Enclosure mounting rail gloss white to suit AB06	600
EUMDBRAIL750	Enclosure mounting rail gloss white to suit AB07	750
EUMDBRAIL900	Enclosure mounting rail gloss white to suit AB09	900
EUMDBRAIL1050	Enclosure mounting rail gloss white to suit AB10	1050
EUMDBRAIL1200	Enclosure mounting rail gloss white to suit AB12	1200
EUMDBRAIL1500	Enclosure mounting rail gloss white to suit AB15	1500
EUMDBRAIL1800	Enclosure mounting rail gloss white to suit AB18	1800
EUMDBRAIL2100	Enclosure mounting rail gloss white to suit AB21	2100

Eureka*



EUMDBRAIL450

Cable Zones

Helps with running cables to the top / bottom of the Eureka enclosure depending on the cable entry required. Minimises cable congestion within the enclosure. Mounts directly next to the Eureka enclosure system and helps with connection of larger cables.

300mm wide and is available to suit enclosures from 1200mm to 2100mm high

In N42 grey or X15 orange. With lift off door

Comes complete with fitted cable tray in rear of enclosure

IP42 (Please enquire for IP56 units)

Part no. N42 grey	Part no. X15 orange	Height	Width	Depth
CZ1200G	CZ1200OR	1200	300	230
CZ1500G	CZ1500OR	1500	300	230
CZ1800G	CZ1800OR	1800	300	230
CZ2100G	CZ2100OR	2100	300	230



CZ1200OR

Cable Termination Enclosures

Lifts the enclosure up to help with terminating large cables / conduits into the Eureka enclosure in 600, 1200 and 1800 wide (1, 2 and 3 tier). Mounts directly above or below the Eureka enclosure.

Part no. N42 grey	Part no. X15 orange	Height	Width	Depth	Tiers
EUR-MDB-CMG-1T-G	EUR-MDB-CMG-1T-OR	300	600	200	1
EUR-MDB-CMG-2T-G	EUR-MDB-CMG-2T-OR	300	1200	200	2
EUR-MDB-CMG-3T-G	EUR-MDB-CMG-3T-OR	300	1800	200	3

Extension Collar (can only be used on IP42 enclosures)

Allows for an extra 100mm to be added to the depth of the distribution board to allow for the fitting of larger components (large contactors, Moulded case circuit breakers, lighting control components etc.)

Part no. N42 grey	Part no. X15 orange	Height	Width	Depth
DB-EXT03-G	DB-EXT03-OR	300	600	100
DB-EXT04-G	DB-EXT04-OR	450	600	100
DB-EXT06-G	DB-EXT06-OR	600	600	100
DB-EXT07-G	DB-EXT07-OR	750	600	100
DB-EXT09-G	DB-EXT09-OR	900	600	100
DB-EXT10-G	DB-EXT10-OR	1050	600	100
DB-EXT12-G	DB-EXT12-OR	1200	600	100
DB-EXT15-G	DB-EXT15-OR	1500	600	100
DB-EXT18-G	DB-EXT18-OR	1800	600	100
DB-EXT21-G	DB-EXT21-OR	2100	600	100



**DB-EXT07-G
FITTED TO AB ACCESSORY
ENCLOSURE**



DB-PLINTH



EUMDBGP3ALPL



DB-PLINTH-GAL



DB-INCABENC-OR WITH EUMDBGP-OR



DB-INCABENC-OR WITH EUMDBVL-OR



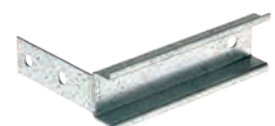
DB-RH60-G



DB-PLINTH GASKET



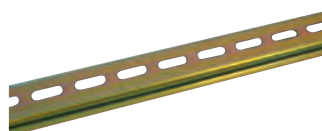
EUMDBDINRAIL



EUMCCBDINRAIL



EUMETDINRAIL



RS-35D8

Plinth

Raises the enclosure above incoming cables and also enables a mechanical protection. Allows for an enclosure to be free standing. Complete with gasket.

Part no.	Description	Height	Width	Depth
DB-PLINTH		50	600	200
DB-PLINTH300		50	600	300
DB-PLINTH-CZ	Plinth to suit cable zone	50	300	200
EUMDBGP3ALPL	Aluminium gland plate to suit DB-PLINTH			

Galvanised Channel Plinth

Galvanised channel plinth for mounting underneath the Eureka enclosure system. Allows for the enclosure to be free standing with lifting holes

Part no.	Description	Height	Width	Depth
DB-PLINTH-GAL		100	600	200
DB-PLINTH300-GAL		100	600	300
DB-PLINTH-GAL-CZ	Galvanised plinth to suit cable zone	100	300	200

Incoming Cable / Ventilation Enclosure

Helps to organise cables entering the enclosure. Also available with ventilation Louvre to help with removing heat from the enclosure if required

Part no. N42 grey	Part no. X15 orange	Height	Width	Depth
		200	600	200
DB-INCABENC-G	DB-INCABENC-OR	Incoming cable enclosure. Gland plate or ventilation Louvre also need to be selected		
EUMDBGP-G	EUMDBGP-OR	Gland plate to suit		
EUMDBVL-G	EUMDBVL-OR	Ventilation Louvre to suit		

Rain Hood

Helps to keep weather from deteriorating the switchboard when mounted outdoors. Used with an IP56 enclosure only. Complete with gasket.

Part no. N42 storm grey	Part no. X15 orange
DB-RH60-G	DB-RH60-OR

Plinth / Rain Hood Gasket

Used when mounting either a plinth or rain hood to an enclosure. Also ideal for creating an IP rated barrier when mounting 2 enclosures together.

Part no.	Description
DB-PLINTH GASKET	Plinth gasket to suit DB-PLINTH-B and DB-RH60-...

DIN Rails

Part no.	Description
EUMDBDINRAIL	Din rail full length to suit eureka enclosure. Used in conjunction with DB-MS-BKT-SP
EUMCCBDINRAIL	Din rail to suit MCCB main switch 15mm. Used in conjunction with DB-MS-BKT-SP
EUMETDINRAIL	Din mount bracket for mounting to the top of Eureka distribution board. Used in conjunction with DB-MS-BKT-SP
RS-35D8	2 metre steel slotted din rail 8mm for mounting items to gear pans
TS35D8	2 metre aluminium solid din rail 8mm for mounting items to gear pans

Main Switch Connection Accessories, Gear Pans & Flush Mounting Kits

Main Switch DIN Bracket

Supports din rail mounted components next to the main switch and when DIN mounted products need to be accessed through the escustcheon.
2 required per set.

Part no.	Colour
DB-MS-BKT-SP	Galvanised steel

Connection Tags

Used between 250 and 400A MCCB and MCB chassis in the enclosure

Part no.	Description
DB-TAG250	Connection tag set for 250A chassis to 250A MCCB main switch set of 3
DB-TAG400	Connection tag set for 400A chassis to 400A MCCB N/A main switch set of 3

Main Switch Connection Shrouds

Shrouds to cover connection tags when mounting between MCB chassis and MCCB main switch

Part no.	Description
DB-MS-250SHROUD	250A MCCB main switch shroud
DB-MS-400SHROUD	400A MCCB main switch shroud

Gear Pans

Manufactured from 2mm steel, gloss white, pre-drilled and rolled edges for strength.

Part no.	Colour	Width	Gear pan height	Suits enclosure height
DB-GEARPAN1	gloss white	534	134	300
DB-GEARPAN2	gloss white	534	296	450
DB-GEARPAN3	gloss white	534	446	600
DB-GEARPAN4	gloss white	534	596	750
DB-GEARPAN5	gloss white	534	746	900
DB-GEARPAN6	gloss white	534	896	1050
DB-GEARPAN7	gloss white	534	1046	1200
DB-GEARPAN8	gloss white	534	1346	1500
DB-GEARPAN9	gloss white	534	1646	1800
DB-GEARPAN10	gloss white	534	1946	2100

Flush Mounting Kits

Allows for the flush mounting of the distribution board into a flat surface

Part no. N42 storm grey	Part no. X15 orange	Height	Width
DB-FMK03-G	DB-FMK03-OR	300	600
DB-FMK04-G	DB-FMK04-OR	450	600
DB-FMK06-G	DB-FMK06-OR	600	600
DB-FMK07-G	DB-FMK07-OR	750	600
DB-FMK09-G	DB-FMK09-OR	900	600
DB-FMK10-G	DB-FMK10-OR	1050	600
DB-FMK12-G	DB-FMK12-OR	1200	600
DB-FMK15-G	DB-FMK15-OR	1500	600
DB-FMK18-G	DB-FMK18-OR	1800	600
DB-FMK21-G	DB-FMK21-OR	2100	600

Main Switch Extension Bracket

For mounting the main switch (EUR-3-250) away from the chassis so metering links can be fitted.
Used when mounting the Chassis and main switch fitted into a standard enclosure

Part no.	Description
DB-MSEMSEXPAN	Metering main switch mounting bracket gloss white

MCCB Main Switch Mounting Bracket

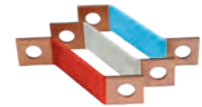
Used when mounting the TS250 MCCB as a main switch directly to the Eureka EMS MCB chassis

Part no.	Description
DB-THMCCB250EMS	TS250 MCCB mounting bracket for connection to Eureka EMS chassis gloss white

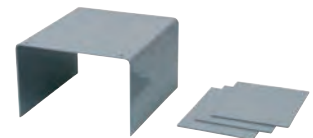
Eureka*



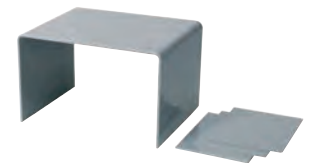
DB-MS-BKT-SP



DB-TAG400



DB-MS-250SHROUD



DB-MS-400SHROUD



DB-GEARPAN1



DB-GEARPAN2



DB-FMK07-G



DB-ENLBKT

Earth and Neutral Bracket

Refer page 73 for Earth & Neutral Bars

Part no.	Description
DB-ENLBKT	Earth and Neutral bracket (4 required per enclosure)
DB-ENLBKT50	Long E&N bracket to suit MDB enclosure

250A Earth Bars

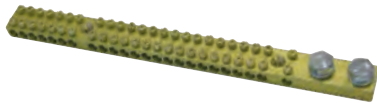
Complete with 2x8mm main studs, 2x35 tunnel terminals.

Part no.	Description	Part no.	Description
NE-250F-P012X	12 pole 250A earth bar	NE-250F-P048X	48 pole 250A earth bar
NE-250F-P018X	18 pole 250A earth bar	NE-250F-P060X	60 pole 250A earth bar
NE-250F-P024X	24 pole 250A earth bar	NE-250F-P072X	72 pole 250A earth bar
NE-250F-P030X	30 pole 250A earth bar	NE-250F-P084X	84 pole 250A earth bar
NE-250F-P036X	36 pole 250A earth bar	NE-250F-P096X	96 pole 250A earth bar
NE-250F-P042X	42 pole 250A earth bar		

400A Earth Bars

Complete with 2x8mm main studs, 2x35 tunnel terminals.

Part no.	Description	Part no.	Description
NE-400F-P024X	24 pole 400A earth bar	NE-400F-P072X	72 pole 400A earth bar
NE-400F-P036X	36 pole 400A earth bar	NE-400F-P084X	84 pole 400A earth bar
NE-400F-P048X	48 pole 400A earth bar	NE-400F-P096X	96 pole 400A earth bar
NE-400F-P060X	60 pole 400A earth bar		



NE-250F-P024X

250A Neutral Bars

Complete with 2x8mm main studs, 2x35 tunnel terminals.
60 pole and above complete with 4 mounting feet.

Part no.	Description	Part no.	Description
NE-250F-P012XF	12 pole 250A neutral bar	NE-250F-P048XF	48 pole 250A neutral bar
NE-250F-P018XF	18 pole 250A neutral bar	NE-250F-P060XF	60 pole 250A neutral bar
NE-250F-P024XF	24 pole 250A neutral bar	NE-250F-P072XF	72 pole 250A neutral bar
NE-250F-P030XF	30 pole 250A neutral bar	NE-250F-P084XF	84 pole 250A neutral bar
NE-250F-P036XF	36 pole 250A neutral bar	NE-250F-P096XF	96 pole 250A neutral bar
NE-250F-P042XF	42 pole 250A neutral bar		



NE-400F-P048X



NE-250F-P018XF

400A Neutral Bars

Complete with 2x8mm main studs, 2x35 tunnel terminals.
60 pole and above complete with 4 mounting feet.

Part no.	Description	Part no.	Description
NE-400F-P024XF	24 pole 400A neutral bar	NE-400F-P072XF	72 pole 400A neutral bar
NE-400F-P036XF	36 pole 400A neutral bar	NE-400F-P084XF	84 pole 400A neutral bar
NE-400F-P048XF	48 pole 400A neutral bar	NE-400F-P096XF	96 pole 400A neutral bar
NE-400F-P060XF	60 pole 400A neutral bar		

Mounting Brackets, Top Hats & Gland Plates

EMS MCB Chassis Mounting Brackets

Lifts the Eureka EMS MCB chassis to the correct height to meet the escutcheon, 2 required per chassis.

Part no.	Description
DB-CB-EUR	Chassis mounting bracket to suit 250A EMS chassis gloss white

Flat Pan MCB Chassis Mounting Brackets

Lifts the Eureka standard flat pan MCB 250 and 400A chassis to the correct height to meet the escutcheon. 2 required per chassis.

Part no.	Description
DB-CB400EUR	Chassis mounting bracket to suit 250 and 400A flat pan chassis gloss white

Split Chassis Mounting Brackets

Mounting bracket when using 2 chassis in a split chassis mounting arrangement.

Part no.	Description
DB-CB-EUR-SP	Split chassis mounting bracket

MCCB Chassis Mounting Brackets

Lifts the Eureka MCCB single-sided chassis to the correct height to meet the escutcheon
Enables the MCCB chassis to be mounted to either R/H or L/H side of the enclosure to enable better / easier cable connection. 2 required per enclosure.

Part no.	Description
EUR-SS800MCCB-TOP	Top chassis mounting bracket to suit SS & DS800
EUR-SS800MCCB-BOT	Bottom chassis mounting bracket to suit SS & DS800

Top Hats

Used for mounting 250A and 400A MCCB / Non-auto main switches.

Part no.	Description
DB-TH-MCCB-250	Top hat for mounting 250A MCCB
DB-TH-MCCB-400	Top hat for mounting 400A MCCB , Non-auto main switch

Spare Gland Plates

Bolts directly to the bottom / top of the Eureka Distribution board and enclosure

Part no.	Description
EUMDBGP3AL	3mm Aluminium gland plate
EUMDBGP6AL	6mm Aluminium gland plate
EUMDBGP-G	1.6mm Mild steel gland plate grey
EUMDBGP-OR	1.6mm Mild steel gland plate orange

Eureka*



DB-CB-EUR
(Does not include chassis)



DB-CB400EUR
(Does not include chassis)



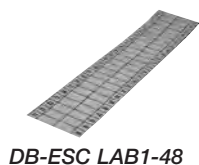
DB-TH-MCCB-250
(Circuit breaker not included)



EUMDBGP3AL



EUMDBGP-OR



DB-ESC LAB1-48



DB-ESC-Z-BRKT



DB-SCREW



EUMDBCABSUP



EUDUCTBKT



EUMDBCTSUPP20



EUMDBCTSUPP90



DB-ESC60



DB-ESC15



DB-ESC07-B



DB-ESC60-MCCB

Extra Enclosure Accessories

Part no.	Description
EUMDBCTSUPP20	Support Bracket to suit MC3 CT
EUMDBCTSUPP90	Raised Support Bracket to suit MC3 CT
EUDUCTBKT	Cable duct support bracket to suit MDB enclosure. Raises duct up by 15mm to allow for ease of RCBO tails wiring
EUMDBCABSUP	Cable Support Bracket to suit MDB enclosures
EUR A4 SCHCARD	Schedule holder
EUR A4 SCHCOVER	Schedule holder card plastic cover
DB-ESC LAB1-48	Escutcheon pole sticker 1-48
DB-ESC LAB49-96	Escutcheon pole sticker 49-96
DB-ESC-Z-BRKT	Escutcheon support Z angle bracket
DB-HP	Hinge Plugs
DB-LS-BKT	Load Shed Bracket for mounting MC225A contactor
DB-SCREW	Eureka DB fixing screws (bag of 50)

Escutcheons

All Escutcheons come with hinges, earthing studs and stiffeners

Please enquire for purpose-cut escutcheons to suit your particular need.

Escutcheon to suit Distribution Board

Part no.	Colour	18mm MCB Pole Capacity	Height
DB-ESC24	gloss white	24	750
DB-ESC42	gloss white	42	900
DB-ESC60	gloss white	60	1050
DB-ESC72	gloss white	72	1200
DB-ESC96	gloss white	96	1500

C-Bus Escutcheon to suit AB Accessory Enclosures

Part no.	Colour	18mm MCB Pole Capacity	Height
DB-ESC03	gloss white	1 x 25 poles	300
DB-ESC04	gloss white	2 x 25 poles	450
DB-ESC06	gloss white	3 x 25 poles	600
DB-ESC09	gloss white	4 x 25 poles	900
DB-ESC10	gloss white	5 x 25 poles	1050
DB-ESC12	gloss white	6 x 25 poles	1200
DB-ESC15	gloss white	8 x 25 poles	1500
DB-ESC18	gloss white	9 x 25 poles	1800
DB-ESC21	gloss white	11 x 25 poles	2100

Blank Escutcheon to suit AB Accessory Enclosures

Part no.	Colour	Height
DB-ESC03-B	gloss white	300
DB-ESC04-B	gloss white	450
DB-ESC06-B	gloss white	600
DB-ESC07-B	gloss white	750
DB-ESC09-B	gloss white	900
DB-ESC10-B	gloss white	1050
DB-ESC12-B	gloss white	1200
DB-ESC15-B	gloss white	1500
DB-ESC18-B	gloss white	1800
DB-ESC21-B	gloss white	2100

Escutcheon to suit Distribution Boards with MCCB Main Switch

with provision for MCCB 250A and 400A MCCB / Non-auto main switch

Part no.	Colour	18mm MCB pole capacity	Suits enclosure Height
DB-ESC36-MCCB	gloss white	24 - 36	1050
DB-ESC60-MCCB	gloss white	48 - 60	1200
DB-ESC84-MCCB	gloss white	72 - 84	1500
DB-ESC96-MCCB	gloss white	96	1800

Electrical Accessories

To compliment the Eureka Distribution Board & Enclosure System, a wide variety of electrical accessories is available to help with workshop or building site manufacturing.

Eureka

PHOENIX CONTACT

LS IS

CIRCUTOR
Technology for energy efficiency



Range includes -

- Eureka of Miniature Circuit Breakers from 1A - 125A in 6ka & 10ka
- Eureka RCBO and RCD units to 63A
- Eureka Installation Contactors
- Eureka Emergency Lighting Test Kits
- Eureka Time Clocks & Timing Relays
- Encapsulated Miniature Circuit Breaker Chassis in 250A and 400A, 18mm/27mm and Hybrid to IEC61439-2
- Susol Range of Moulded Case Circuit Breakers from 16A - 630A in 50ka & 65ka
- Susol Moulded Case Circuit Breaker Accessories
- Eureka Encapsulated 800A Single Sided MCCB Chassis to IEC61439-2
- Metasol Range of Standard Frame Contactors and Overloads
- Phoenix Surge Protection Devices
- DIN Mounted Terminals up to 240mm²
- Eureka Slotted Cable Duct
- Eureka DIN Mounted Metal Load Centres to 96 pole
- Eureka DIN Mounted Plastic Load Centres to 36 pole
- CVS Metal Enclosures
- Eureka Service Fuses
- Eureka DIN Mounted GPOs to 15A
- Cam Switches, Panel & Centre Mount A/O/M and On/Off
- Pilot Lights & Lamp Test Diode Blocks
- Transformers, Relays & Current Sensing Relays
- Automatic Transfer Switches
- Eureka Temporary Supply Switchboards

PLUS much more!



Eureka 6kA - C Curve

Rated breaking capacity 6kA. From 1 to 63A. 18mm width per pole

1 Pole Part no.	A	2 Pole Part no.	A	3 Pole Part no.	A
LSBE1P1-C	1	LSBE2P1-C	1	LSBE3P1-C	1
LSBE1P2-C	2	LSBE2P2-C	2	LSBE3P2-C	2
LSBE1P3-C	3	LSBE2P3-C	3	LSBE3P3-C	3
LSBE1P4-C	4	LSBE2P4-C	4	LSBE3P4-C	4
LSBE1P6-C	6	LSBE2P6-C	6	LSBE3P6-C	6
LSBE1P10-C	10	LSBE2P10-C	10	LSBE3P10-C	10
LSBE1P16-C	16	LSBE2P16-C	16	LSBE3P16-C	16
LSBE1P20-C	20	LSBE2P20-C	20	LSBE3P20-C	20
LSBE1P25-C	25	LSBE2P25-C	25	LSBE3P25-C	25
LSBE1P32-C	32	LSBE2P32-C	32	LSBE3P32-C	32
LSBE1P40-C	40	LSBE2P40-C	40	LSBE3P40-C	40
LSBE1P50-C	50	LSBE2P50-C	50	LSBE3P50-C	50
LSBE1P63-C	63	LSBE2P63-C	63	LSBE3P63-C	63



LSBE1P20-C

LSBE3P20-C

Eureka 6kA - D Curve

Rated breaking capacity 6kA. From 1 to 63A. 18mm width per pole

1 Pole Part no.	A	2 Pole Part no.	A	3 Pole Part no.	A
LSBE1P1-D	1	LSBE2P1-D	1	LSBE3P1-D	1
LSBE1P2-D	2	LSBE2P2-D	2	LSBE3P2-D	2
LSBE1P3-D	3	LSBE2P3-D	3	LSBE3P3-D	3
LSBE1P4-D	4	LSBE2P4-D	4	LSBE3P4-D	4
LSBE1P6-D	6	LSBE2P6-D	6	LSBE3P6-D	6
LSBE1P10-D	10	LSBE2P10-D	10	LSBE3P10-D	10
LSBE1P16-D	16	LSBE2P16-D	16	LSBE3P16-D	16
LSBE1P20-D	20	LSBE2P20-D	20	LSBE3P20-D	20
LSBE1P25-D	25	LSBE2P25-D	25	LSBE3P25-D	25
LSBE1P32-D	32	LSBE2P32-D	32	LSBE3P32-D	32
LSBE1P40-D	40	LSBE2P40-D	40	LSBE3P40-D	40
LSBE1P50-D	50	LSBE2P50-D	50	LSBE3P50-D	50
LSBE1P63-D	63	LSBE2P63-D	63	LSBE3P63-D	63

Eureka 10kA - C Curve

Rated breaking capacity 10kA. From 1 to 63A. 18mm width per pole

1 Pole Part no.	A	2 Pole Part no.	A	3 Pole Part no.	A
LSBS1P1-C	1	LSBS2P1-C	1	LSBS3P1-C	1
LSBS1P2-C	2	LSBS2P2-C	2	LSBS3P2-C	2
LSBS1P3-C	3	LSBS2P3-C	3	LSBS3P3-C	3
LSBS1P4-C	4	LSBS2P4-C	4	LSBS3P4-C	4
LSBS1P6-C	6	LSBS2P6-C	6	LSBS3P6-C	6
LSBS1P10-C	10	LSBS2P10-C	10	LSBS3P10-C	10
LSBS1P16-C	16	LSBS2P16-C	16	LSBS3P16-C	16
LSBS1P20-C	20	LSBS2P20-C	20	LSBS3P20-C	20
LSBS1P25-C	25	LSBS2P25-C	25	LSBS3P25-C	25
LSBS1P32-C	32	LSBS2P32-C	32	LSBS3P32-C	32
LSBS1P40-C	40	LSBS2P40-C	40	LSBS3P40-C	40
LSBS1P50-C	50	LSBS2P50-C	50	LSBS3P50-C	50
LSBS1P63-C	63	LSBS2P63-C	63	LSBS3P63-C	63



LSBS1P20-C

LSBS3P20-C

10kA - C Curve 27mm Width

Rated breaking capacity 10kA. From 63 to 125A. 27mm width

1 Pole Part no.	A	2 Pole Part no.	A	3 Pole Part no.	A
BKH1P63-C	63	BKH2P63-C	63	BKH3P63-C	63
BKH1P80-C	80	BKH2P80-C	80	BKH3P80-C	80
BKH1P100-C	100	BKH2P100-C	100	BKH3P100-C	100
BKH1P125-C	125	BKH2P125-C	125	BKH3P125-C	125



BKH3P-100C

Miniature Circuit Breakers RCD's and Accessories

Eureka 10kA - D Curve

Rated breaking capacity 10kA. From 1 to 63A. 18mm width per pole

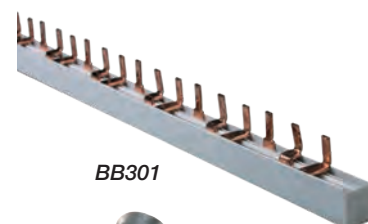
1 Pole Part no.	A	2 Pole Part no.	A	3 Pole Part no.	A
LSBS1P1-D	1	LSBS2P1-D	1	LSBS3P1-D	1
LSBS1P2-D	2	LSBS2P2-D	2	LSBS3P2-D	2
LSBS1P3-D	3	LSBS2P3-D	3	LSBS3P3-D	3
LSBS1P4-D	4	LSBS2P4-D	4	LSBS3P4-D	4
LSBS1P6-D	6	LSBS2P6-D	6	LSBS3P6-D	6
LSBS1P10-D	10	LSBS2P10-D	10	LSBS3P10-D	10
LSBS1P16-D	16	LSBS2P16-D	16	LSBS3P16-D	16
LSBS1P20-D	20	LSBS2P20-D	20	LSBS3P20-D	20
LSBS1P25-D	25	LSBS2P25-D	25	LSBS3P25-D	25
LSBS1P32-D	32	LSBS2P32-D	32	LSBS3P32-D	32
LSBS1P40-D	40	LSBS2P40-D	40	LSBS3P40-D	40
LSBS1P50-D	50	LSBS2P50-D	50	LSBS3P50-D	50
LSBS1P63-D	63	LSBS2P63-D	63	LSBS3P63-D	63



LSBS1P20-D LSBS3P20-D



BKH3P-100D



BB301



MCBLDOG



LSKBI1P100 LSKBI3P100



LSR6263-30



LSR6440-30

10kA - D Curve 27mm Width

Rated breaking capacity 10kA. From 63 to 125A. 27mm width.

1 Pole Part no.	A	2 Pole Part no.	A	3 Pole Part no.	A
BKH1P63-D	63	BKH2P63-D	63	BKH3P63-D	63
BKH1P80-D	80	BKH2P80-D	80	BKH3P80-D	80
BKH1P100-D	100	BKH2P100-D	100	BKH3P100-D	100
BKH1P125-D	125	BKH2P125-D	125	BKH3P125-D	125

MCB Accessories

Part no.	Description
<i>Fits to LSBE & LSBS MCB's</i>	
LSB-AX-6A	6A changeover contact auxiliary 1 x C/O
LSB-AL-6A	6A trip indication auxiliary contact 1 x C/O
LSB-ST-24V	6A shunt trip auxiliary contact 1 x C/O 24V AC/DC
LSB-ST-240V	6A shunt trip auxiliary contact 1 x C/O 240V AC/DC
<i>Commoning Bars</i>	
BB101	1m length pin type commoning bar, 1 phase
BB301	1m length pin type commoning bar, 3 phase
<i>Pole fillers & lock dogs</i>	
EUR-PF6	6 Pole, pole filler
MCBLDOG	Lock dog to suit LSBE / LSBS / BKH / LSTO / LSSO MCB/RCBO

Eureka Switch Disconnectors (Isolators)

Units are rated at 63-125A. From 1 to 3 pole. Non auto

Part no	Description
LSKBI1P63	63A 1 pole 10kA Switch disconnector
LSKBI1P100	100A 1 pole 10kA Switch disconnector
LSKBI1P125	125A 1 pole 10kA Switch disconnector
LSKBI2P63	63A 2 pole 10kA Switch disconnector
LSKBI2P100	100A 2 pole 10kA Switch disconnector
LSKBI2P125	125A 2 pole 10kA Switch disconnector
LSKBI3P63	63A 3 pole 10kA Switch disconnector
LSKBI3P100	100A 3 pole 10kA Switch disconnector
LSKBI3P125	125A 3 pole 10kA Switch disconnector

Eureka Residual Current Devices

30 mA sensitivity. 2 and 4 pole units. From 40 to 63A

Part no.	Description
LSR6240-30	40A 2 pole 30mA RCD
LSR6263-30	63A 2 pole 30mA RCD
LSR6440-30	40A 4 pole 30mA RCD
LSR6463-30	63A 4 pole 30mA RCD

Please contact your distributor for pricing details.



LSSO20/C003-A

Eureka 1 Pole RCBO Type A 10kA

18mm width per pole

Part no.	Description
<i>1 pole 30mA, C curve</i>	
LSSO6/C003-A	1P 6A RCBO 10kA 30mA C curve type A
LSSO10/C003-A	1P 10A RCBO 10kA 30mA C curve type A
LSSO16/C003-A	1P 16A RCBO 10kA 30mA C curve type A
LSSO20/C003-A	1P 20A RCBO 10kA 30mA C curve type A
LSSO25/C003-A	1P 25A RCBO 10kA 30mA C curve type A
LSSO32/C003-A	1P 32A RCBO 10kA 30mA C curve type A
LSSO40/C003-A	1P 40A RCBO 10kA 30mA C curve type A
<i>1 pole 30mA, D curve</i>	
LSSO6/D003-A	1P 6A RCBO 10kA 30mA D curve type A
LSSO10/D003-A	1P 10A RCBO 10kA 30mA D curve type A
LSSO16/D003-A	1P 16A RCBO 10kA 30mA D curve type A
LSSO20/D003-A	1P 20A RCBO 10kA 30mA D curve type A
LSSO25/D003-A	1P 25A RCBO 10kA 30mA D curve type A
LSSO32/D003-A	1P 32A RCBO 10kA 30mA D curve type A
LSSO40/D003-A	1P 40A RCBO 10kA 30mA D curve type A
<i>1 pole 10mA, C curve</i>	
LSSO10/C001-A	1P 6A RCBO 10kA 10mA C curve type A
LSSO16/C001-A	1P 10A RCBO 10kA 10mA C curve type A
LSSO20/C001-A	1P 20A RCBO 10kA 10mA C curve type A
LSSO25/C001-A	1P 25A RCBO 10kA 10mA C curve type A

Eureka 3 Pole RCBO Type A 10kA

18mm width per pole



LSTO32C/C003A

Part no.	Description
<i>3 pole 30mA, C curve</i>	
LSTO6C/003A	3P 6A RCBO 10kA 30mA C curve type A
LSTO10C/003A	3P 10A RCBO 10kA 30mA C curve type A
LSTO16C/003A	3P 16A RCBO 10kA 30mA C curve type A
LSTO20C/003A	3P 20A RCBO 10kA 30mA C curve type A
LSTO25C/003A	3P 25A RCBO 10kA 30mA C curve type A
LSTO32C/003A	3P 32A RCBO 10kA 30mA C curve type A
LSTO40C/003A	3P 40A RCBO 10kA 30mA C curve type A
LSTO50C/003A	3P 50A RCBO 10kA 30mA C curve type A
LSTO63C/003A	3P 63A RCBO 10kA 30mA C curve type A
<i>3 pole 30mA, D curve</i>	
LSTO10D/003A	3P 10A RCBO 10kA 30mA D curve type A
LSTO16D/003A	3P 16A RCBO 10kA 30mA D curve type A
LSTO20D/003A	3P 20A RCBO 10kA 30mA D curve type A
LSTO25D/003A	3P 25A RCBO 10kA 30mA D curve type A
LSTO32D/003A	3P 32A RCBO 10kA 30mA D curve type A
LSTO40D/003A	3P 40A RCBO 10kA 30mA D curve type A
LSTO50D/003A	3P 50A RCBO 10kA 30mA D curve type A
LSTO63D/003A	3P 63A RCBO 10kA 30mA D curve type A
<i>3 pole 10mA, C curve</i>	
LSTO16C/001A	3P 16A RCBO 10kA 10mA C curve type A
LSTO20C/001A	3P 20A RCBO 10kA 10mA C curve type A



LSNO-C20 30mA

Eureka 1 Pole Compact RCBO Type A 6kA

Tested and approved here in Australia for your peace of mind, this compact RCBO is rated at 6kA, has a 30mA trip, and is Type A to suit AC and pulsating DC currents. 18mm width per pole.

Part No.	Description
LSNO-C6 30mA	1 Pole 6A 30mA RCBO 6kA Type A
LSNO-C10 30mA	1 Pole 10A 30mA RCBO 6kA Type A
LSNO-C16 30mA	1 Pole 16A 30mA RCBO 6kA Type A
LSNO-C20 30mA	1 Pole 20A 30mA RCBO 6kA Type A
LSNO-C25 30mA	1 Pole 25A 30mA RCBO 6kA Type A
LSNO-C32 30mA	1 Pole 32A 30mA RCBO 6kA Type A
LSNO-C40 30mA	1 Pole 40A 30mA RCBO 6kA Type A



EUR-BBC6P

Busbar to suit LSNO RCBO's

Eureka 6 pole busbar to suit the LSNO. Comes with in built L and N terminals for ease of connection as well as looping. Fully insulated pins so spares are protected. Rated at 80amps.

Part No.	Description
EUR-BBC6P	6 way buscomb for LSNO RCBO's

Time Clocks, Timing Relays, Change Over Switches, Installation Contactors, Emergency Lighting Test Kits & DIN GPOs

Change Over Switch

Part no.	Function
Z-S/WM	2 CO I-0-II

Eureka Time Clocks

Eureka time clocks for residential and commercial applications. Easy to program, analogue (240VAC) and digital types (240VAC / 24VDC / 12VDC).

Part no.	Description
<i>Analogue 240VAC</i>	
SUL180A	1 channel compact 18mm wide 24hr time clock with 70hr battery backup, 15 minute increments
SUL181H	1 channel 54mm wide 24hr time clock DIN mount with 150hr battery backup, MCB profile
AH711	1 channel 54mm wide 24hr time clock DIN mount with 70hr battery backup, 30 minute increments
<i>Digital</i>	
PET 010	1 channel 36mm wide 240VAC 24 hour 7 day time clock din rail mount
AHC-812	2 channel 36mm wide 240VAC 24 hour 7 day time clock, reserve 16A
67DDT0	Digital Time Switch, Crono 7Day, 110-240VAC
67DDT9	Digital Time Switch, Pulse 7Day, 110-240VAC

Multi Range / Multi Voltage Timing Relays

Part no.	Description
1CQDT9	Electronic Multifunction Timer, 12-240VAC/DC 0.1s-100H
14SDT1S	Star Delta Timer, 3-30sec 240-415VAC
23GDT0	True OFF Delay Timer, 24-240VAC/DC 2C/O
17UDT0	Brown Out Timer, On Delay 230VAC 1C/O

Eureka Brand Installation Contactors

Snap fit onto din rail, Power ratings 25, 40 and 63, 24VAC and 240VAC coil voltages. Choice of main contact configurations, Operating temperature -5 deg C to +50 deg C

Part No.	Rated Current (AMPS) AC1	Rated Current (AMPS) AC3	Coil Voltage	No. of Contacts	Modules (18mm)
EUR225-11 24V	25	9	24	1 NC, 1 NO	1
EUR225-20 24V	25	9	24	2 NO	1
EUR225-11 240V	25	9	240	1 NO 1 NC	1
EUR225-20 240V	25	9	240	2 NO	1
EUR425-13 240V	25	9	240	1 NO, 3 NC	2
EUR425-31 240V	25	9	240	3 NO, 1 NC	2
EUR425-40 240V	25	9	240	4 NO	2
EUR425-40 24V	25	9	24	4 NO	4
EUR425-04 240V	25	9	240	4 NC	2
EUR425-22 240V	25	9	240	2 NO, 2 NC	2
EUR440-40 240V	40	27	240	4 NO	4
EUR463-40 240V	63	30	240	4 NO	4

Emergency Lighting Test Kit - Electronic Type

New compact design. Expandable when used with Eureka TS installation contactors. Can be used DIN mounted in switchboards or surface mounted in optional MCB cover. 90min or 120min selectable test function. Power on indication. Timer initiated indication. 4 pole 16A (AC1) rated. Complies to AS/NZS standards.

Part no.	Description
T-ELTUELX	Emergency lighting test kit electronic type – expandable
T-ELTUE	Emergency lighting test kit – enclosed type
T-ELTUELXK6	Spare key for emergency test unit LX

Switchboard / DIN Mount GPO

Part no.	Description
EUR-DPDGPO 10A	10A single GPO IP32 double pole auto switched, power available indicator when plug inserted
EUR-DPDGPO 15A	15A single GPO IP32 double pole auto switched, power available indicator when plug inserted

Eureka*



Z-S/WM



SUL181H



SUL180A



AH711



67DDT0



1CQDT9



14SDT1S



17UDT0



EUR225-20 240V



EUR425-04 240V



T-ELTUELX



EUR-DPDGPO 15A

Please contact your distributor for pricing details.



ELS6-42/18EM1



EMS STYLE CHASSIS WITH EUR-3-250 FITTED



EUR-3-250

EMS style encapsulated chassis with option to fit EUR-3-250 main switch to chassis pan.
 Suits DB-CB-EUR mounting brackets
 With facility for direct mounting to EUR-3-250 main switch.
 Rated current 250 and 400A (250A unit only in EMS style)
 Fault current 25kA @ 0.1 sec
 Suits Eureka 18mm & 27mm pitch MCB & RCBO's
 Tested to IEC61439-2
 Rated peak withstand current 52.5kA
 Standard and hybrid encapsulated chassis
 Please enquire for escutcheon cut-out and mounting details
Please enquire for other configuration chassis
Please enquire for bottom and dual-feed chassis
 EMS type encapsulated chassis does not include main switch.

DIN Circuit Breaker Encapsulated Chassis 250A to suit LSBE / LSBS / BKH / MCB & LSSO / LSTO RCBO's

Part no.	No. Poles	Width mm	Length mm	Height mm with MCB	Configuration	
					LSBE, LSBS, LSSO, LSTO 18mm Pitch	BKH 27mm Pitch
<i>250A 3 phase 18mm EMS chassis to suit LSBE, LSBS, LSSO & LSTO MCB / RCBO's</i>						
ELS6-12/18EM1	12	220	242	133	12	
ELS6-18/18EM1	18	220	296	133	18	
ELS6-24/18EM1	24	220	350	133	24	
ELS6-30/18EM1	30	220	404	133	30	
ELS6-36/18EM1	36	220	458	133	36	
ELS6-42/18EM1	42	220	512	133	42	
ELS6-48/18EM1	48	220	566	133	48	
ELS6-60/18EM1	60	220	674	133	60	
ELS6-72/18EM1	72	220	782	133	72	
ELS6-84/18EM1	84	220	890	133	84	
ELS6-96/18EM1	96	220	998	133	96	
<i>250A 3 phase hybrid 18mm / 27mm EMS chassis to suit LSBE, LSBS, BKH, LSSO & LSTO MCB / RCBO's</i>						
ELS6-12/1827EM1	12	220	269	133	6	6
ELS6-18/1827EM1	18	220	323	133	12	6
ELS6-24/1827EM1	24	220	377	133	18	6
ELS6-30/1827EM1	30	220	431	133	24	6
ELS6-36/1827EM1	36	220	485	133	30	6
ELS6-42/1827EM1	42	220	566	133	30	12
ELS6-48/1827EM1	48	220	620	133	36	12
ELS6-60/1827EM1	60	220	728	133	48	12
ELS6-72/1827EM1	72	220	836	133	60	12
<i>250A 3 phase 27mm EMS chassis to suit BKH MCB's</i>						
ELS6-12/27EM1	12	220	296	133		12
ELS6-18/27EM1	18	220	377	133		18
ELS6-24/27EM1	24	220	458	133		24
ELS6-30/27EM1	30	220	539	133		30
ELS6-36/27EM1	36	220	620	133		36
ELS6-42/27EM1	42	220	701	133		42
ELS6-48/27EM1	48	220	782	133		48
ELS6-60/27EM1	60	220	944	133		60
ELS6-72/27EM1	72	220	1106	133		72

Compact Loadbreak Switch

EUR-3-250 fits directly to 250A EMS Eureka MCB chassis

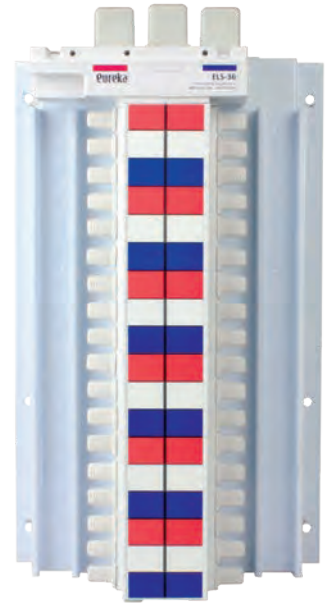
Part no.	Description
EUR-3-250	250A 3kA load break switch including shrouds
EUR-3-250PD	Padlock attachment

Flat pan style chassis. Suits DB-CB400-EUR mounting brackets.

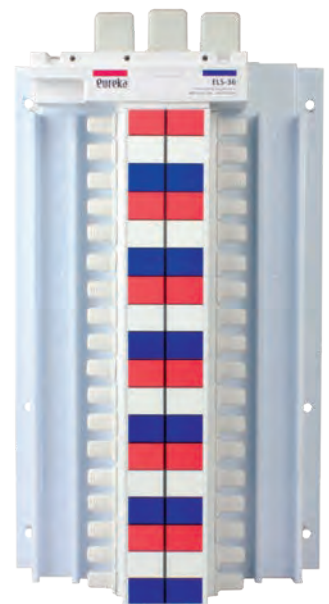
DIN Circuit Breaker Encapsulated Chassis 250A & 400A to suit LSBE / LSBS / BKH / MCB & LSSO / LSTO RCBO's



IMPROVED & EXPANDED RANGE



ELS6-36/181



ELS6-36/182

Part no.	No. Poles	Width mm	Length mm	Height mm with MCB	Configuration	
					LSBE, LSBS, LSSO, LSTO 18mm Pitch	BKH 27mm Pitch
<i>250A 3 phase 18mm flat pan chassis to suit LSBE, LSBS, LSSO & LSTO MCB / RCBO's</i>						
ELS6-12/181	12	220	174	115	12	
ELS6-18/181	18	220	228	115	18	
ELS6-24/181	24	220	282	115	24	
ELS6-30/181	30	220	336	115	30	
ELS6-36/181	36	220	390	115	36	
ELS6-42/181	42	220	444	115	42	
ELS6-48/181	48	220	498	115	48	
ELS6-60/181	60	220	606	115	60	
ELS6-72/181	72	220	714	115	72	
ELS6-84/181	84	220	822	115	84	
ELS6-96/181	96	220	930	115	96	
<i>250A 3 phase hybrid 18mm / 27mm flat pan chassis to suit LSBE, LSBS, BKH, LSSO & LSTO MCB / RCBO's</i>						
ELS6-12/18271	12	220	269	115	6	6
ELS6-18/18271	18	220	323	115	12	6
ELS6-24/18271	24	220	377	115	18	6
ELS6-30/18271	30	220	431	115	24	6
ELS6-36/18271	36	220	485	115	30	6
ELS6-42/18271	42	220	566	115	30	12
ELS6-48/18271	48	220	620	115	36	12
ELS6-60/18271	60	220	728	115	48	12
ELS6-72/18271	72	220	836	115	60	12
<i>250A 3 phase 27mm flat pan chassis to suit BKH MCB's</i>						
ELS6-12/271	12	220	296	115		12
ELS6-18/271	18	220	377	115		18
ELS6-24/271	24	220	458	115		24
ELS6-30/271	30	220	539	115		30
ELS6-36/271	36	220	620	115		36
ELS6-42/271	42	220	701	115		42
ELS6-48/271	48	220	782	115		48
ELS6-60/271	60	220	944	115		60
ELS6-72/271	72	220	1106	115		72
<i>400A 3 phase 18mm flat pan chassis to suit LSBE, LSBS, LSSO & LSTO MCB / RCBO's</i>						
ELS6-12/182	12	220	174	115	12	
ELS6-18/182	18	220	228	115	18	
ELS6-24/182	24	220	282	115	24	
ELS6-30/182	30	220	336	115	30	
ELS6-36/182	36	220	390	115	36	
ELS6-42/182	42	220	444	115	42	
ELS6-48/182	48	220	498	115	48	
ELS6-60/182	60	220	606	115	60	
ELS6-72/182	72	220	714	115	72	
ELS6-84/182	84	220	822	115	84	
ELS6-96/182	96	220	930	115	96	
<i>400A 3 phase hybrid 18mm / 27mm flat pan chassis to suit LSBE, LSBS, BKH, LSSO & LSTO MCB / RCBO's</i>						
ELS6-12/18272	12	220	269	115	6	6
ELS6-18/18272	18	220	323	115	12	6
ELS6-24/18272	24	220	377	115	18	6
ELS6-30/18272	30	220	431	115	24	6
ELS6-36/18272	36	220	485	115	30	6
ELS6-42/18272	42	220	566	115	30	12
ELS6-48/18272	48	220	620	115	36	12
ELS6-60/18272	60	220	728	115	48	12
ELS6-72/18272	72	220	836	115	60	12
<i>400A 3 phase 27mm flat pan chassis to suit BKH MCB's</i>						
ELS6-12/272	12	220	296	115		12
ELS6-18/272	18	220	377	115		18
ELS6-24/272	24	220	458	115		24
ELS6-30/272	30	220	539	115		30
ELS6-36/272	36	220	620	115		36
ELS6-42/272	42	220	701	115		42
ELS6-48/272	48	220	782	115		48
ELS6-60/272	60	220	944	115		60
ELS6-72/272	72	220	1106	115		72

Please contact your distributor for pricing details.



TS Range of MCCB Units and Accessories from 32 to 630A

From 32A to 630A. With short circuit and overload release. 50 and 65kA units available. Electronic and thermal / magnetic protection

Accessories include -

Fixed and external handles. Terminal spreaders and covers
 Single sided 800A chassis to 36 pole Fixed and removable locking devices
 Non auto units to 630A available

Please enquire for MCCBs up to 1600A and 4 Pole frame.

TS100/160/250 are the same physical frame sizes.

Please enquire for cascade and discrimination data. CAD blocks CD available.



TS100NFMU100



TS250NETS250



TS400NETS400



TS630NETS630



TS250DSU

TS100 Range 32 - 100A 50kA

Part no.	Description	Frame Size	No. of Poles
TS100NFMU40	32-40A 50kA Thermal magnetic MCCB	1	3
TS100NFMU63	50-63A 50kA Thermal magnetic MCCB	1	3
TS100NFMU80	64-80A 50kA Thermal magnetic MCCB	1	3
TS100NFMU100	80-100A 50kA Thermal magnetic MCCB	1	3
TS100NETS40	40-100A 50kA Electronic MCCB	1	3
TS100NETS80	40-80A 50kA Electronic MCCB	1	3

TS160 Range 80 - 160A 50kA

Part no.	Description	Frame Size	No. of Poles
TS160NFMU100	80-100A 50kA Thermal magnetic MCCB	1	3
TS160NFMU125	100-125A 50kA Thermal magnetic MCCB	1	3
TS160NFMU160	128-160A 50kA Thermal magnetic MCCB	1	3
TS160NETS160	64-160A 50 kA Electronic MCCB	1	3

TS250 Range 100 - 250A 50kA

Part no.	Description	Frame Size	No. of Poles
TS250NATU125	100-125A 50kA Thermal magnetic MCCB	1	3
TS250NATU160	128-160A 50kA Thermal magnetic MCCB	1	3
TS250NATU200	180-200A 50kA Thermal magnetic MCCB	1	3
TS250NATU250	200-250A 50kA Thermal magnetic MCCB	1	3
TS250NETS250	100-250A 50kA Electronic MCCB	1	3

TS400 / 630 Range 160 - 630A 65kA

Part no.	Description	Frame Size	No. of Poles
TS400NETS400	160-400A 65kA Electronic MCCB	2	3
TS630NETS630	252-630A 65kA Electronic MCCB	2	3

TS Range Non Auto 100 - 630A

Part no.	Description	Frame Size	No. of Poles
TS100DSU100	100A Non auto isolator	1	3
TS160DSU160	160A Non auto isolator	1	3
TS250DSU250	250A Non auto isolator	1	3
TS400DSU400	400A Non auto isolator	2	3
TS630DSU630	630A Non auto isolator	2	3

Moulded Case Circuit Breaker Accessories & Current Transformers

Extended & Direct Mount Lockable Handles

Part no.	Description	Suits MCCB
LS-DH2-S-TS	Direct rotary handle	TS100/160/250
LS-DH3-S-TS	Direct rotary handle	TS400/630
LS-EH2-S-TS	Extended rotary handle and shaft	TS100/160/250
LS-EH3-S-TS	Extended rotary handle and shaft	TS400/630

Locking Devices

Part no.	Description	Suits MCCB
LS-PL2-TS	Removable locking device	TS100/160/250
LS-PL3-TS	Removable locking device	TS400/630
LS-PHL2-TS	Fixed locking device	TS100/160/250
LS-PHL3-TS	Fixed locking device	TS400/630

Terminal Covers. Supplied in Pairs

Part no.	Description	Suits MCCB
LS-ITL23-TS	Terminal cover long type	TS100/160/250
LS-ITL33-TS	Terminal cover long type	TS400/630
LS-ITS23-TS	Terminal cover short type	TS100/160/250
LS-ITS33-TS	Terminal cover short type	TS400/630

Terminal Spreaders. Per set of 3

Part no.	Description	Suits MCCB
LS-SP23A-TS	Terminal spreaders	TS100/160/250
LS-SP33A-TS	Terminal spreaders	TS400/630

Current Transformers - Solid Core Units

Part no.	Ratio Amps	Class 0.5 VA	Class 1 VA	Part no.	Ratio Amps	Class 0.5 VA	Class 1 VA
RCT1/30	30/5		1	RCT2/200	200/5	3.75	5
RCT1/40	40/5		1	RCT2/250	250/5	5	7.5
RCT1/50	50/5		1.5	RCT2/300	300/5	5	7.5
RCT1/60	60/5		1.5	RCT3/300	300/5	5	7.5
RCT1/75	75/5		1.5	RCT3/400	400/5	10	12.5
RCT1/80	80/5		2	RCT3/500	500/5	10	12.5
RCT1/100	100/5	1.5	2.5	RCT3/600	600/5	15	15
RCT1/120	120/5	2.5	3.75	RCT4/600	600/5	7.5	12.5
RCT1/125	125/5	2.5	3.75	RCT4/750	750/5	10	15
RCT1/150	150/5	3.75	5				

3 in 1 Current Transformers

Features -

- » Excellent space savings / Compact size
- » Busbar and cable compatible
- » Removable terminal covers
- » IEC / EN 60044-1, IEC 61869-1
- » Continuous over current x 1.2
- » Same width as the appropriate MCCB to be measured
- » DIN rail mounting (c/w din clips)
- » From 100-630 A with 5A secondary
- » Flame retardant UL94V-0
- » Class 1 rating

Part no.	Class 1	Ratio
3PH75-15 60 100	1.5vA	3 x 100/5
3PH105-21 40 160	1.5vA	3 x 160/5
3PH105-21 40 200	1.5vA	3 x 200/5
3PH105-21 40 250	1.5vA	3 x 250/5
3PH140-31 40 400	2.5vA	3 x 400/5
3PH140-31 40 500	2.5vA	3 x 500/5
3PH140-31 40 630	2.5vA	3 x 630/5

Susol
Super Solution



LS-DH2-S-TS

LS-EH3-S-TS



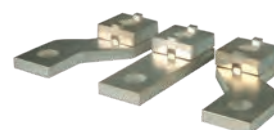
LS-PL3-TS

LS-PHL3-TS



LS-ITL33-TS

LS-ITS33-TS



LS-SP33A-TS

Eureka



3PH75-15 60 100

3PH105-21 40 250



3PH140-31 40 630

Moulded Case Circuit Breaker Chassis

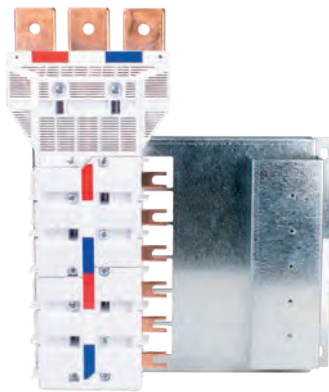


Eureka MCCB Encapsulated Chassis, 35kA 630A & 800A to suit TS250 / TS160 and TS100 MCCB

Encapsulated style. IP20. Dual feed. Available in single and double sided configuration. Tested to 50KA @ 1 sec (800AMP), 50KA @ 0.5 sec (630 AMP), IEC 61439-2. Please enquire for dual or bottom feed only. 630 & 800A chassis are physically the same size except for main busbars (630A units 40mm x 6.35mm, 800A units 40mm x 8.00mm). Suits TS250 / TS160 and TS100 MCCB with 35mm tee off terminal centres. Singled sided units have been designed for easy adaption into the Eureka Distribution & Enclosure System. Please enquire for mounting brackets to bring the chassis to the height of the escutcheon. CAD blocks and dimensional drawings available on request

3 Phase 630A & 800A Single Sided Chassis, Top Feed

If required, please nominate dual feed (DF) or bottom feed (BF)
Please nominate single sided 630A & 800A units SS..R (right hand pan) or SS..L (left hand pan)

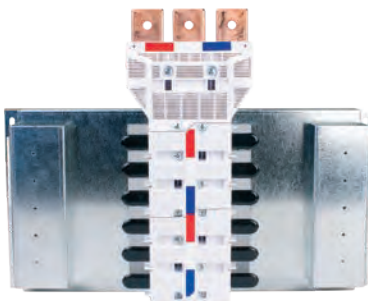


LS63035-6TF-SS

Part no.	No. of poles	Dimensions			
		Length mm (DF)	Length mm (TF or BF)	Pan Width	Height mm with MCCB fitted
630A					
LS63035-3TF-SS	3	393	268	325	144
LS63035-6TF-SS	6	498	373	325	144
LS63035-9TF-SS	9	603	478	325	144
LS63035-12TF-SS	12	708	583	325	144
LS63035-15TF-SS	15	813	688	325	144
LS63035-18TF-SS	18	918	793	325	144
LS63035-21TF-SS	21	1023	898	325	144
LS63035-24TF-SS	24	1128	1003	325	144
LS63035-30TF-SS	30	1338	1213	325	144
LS63035-36TF-SS	36	1548	1423	325	144
800A					
LS80035-3TF-SS	3	393	268	325	144
LS80035-6TF-SS	6	498	373	325	144
LS80035-9TF-SS	9	603	478	325	144
LS80035-12TF-SS	12	708	583	325	144
LS80035-15TF-SS	15	813	688	325	144
LS80035-18TF-SS	18	918	793	325	144
LS80035-21TF-SS	21	1023	898	325	144
LS80035-24TF-SS	24	1128	1003	325	144
LS80035-30TF-SS	30	1338	1213	325	144
LS80035-36TF-SS	36	1548	1423	325	144

3 Phase 630A & 800A Double Sided Chassis, Top Feed

If required, please nominate dual feed (DF) or bottom feed (BF)
Please nominate single sided 630A & 800A units SS..R (right hand pan) or SS..L (left hand pan)



LS63035-18TF-DS

Part no.	No. of poles	Dimensions			
		Length mm (DF)	Length mm (TF or BF)	Pan Width	Height mm with MCCB fitted
630A					
LS63035-6TF-DS	6	393	268	491	144
LS63035-12TF-DS	12	498	373	491	144
LS63035-18TF-DS	18	603	478	491	144
LS63035-24TF-DS	24	708	583	491	144
LS63035-30TF-DS	30	813	688	491	144
LS63035-36TF-DS	36	918	793	491	144
LS63035-42TF-DS	42	1023	898	491	144
LS63035-48TF-DS	48	1128	1003	491	144
LS63035-60TF-DS	60	1338	1213	491	144
LS63035-72TF-DS	72	1548	1423	491	144
800A					
LS80035-6TF-DS	6	393	268	491	144
LS80035-12TF-DS	12	498	373	491	144
LS80035-18TF-DS	18	603	478	491	144
LS80035-24TF-DS	24	708	583	491	144
LS80035-30TF-DS	30	813	688	491	144
LS80035-36TF-DS	36	918	793	491	144
LS80035-42TF-DS	42	1023	898	491	144
LS80035-48TF-DS	48	1128	1003	491	144
LS80035-60TF-DS	60	1338	1213	491	144
LS80035-72TF-DS	72	1548	1423	491	144

Eureka

Temporary Powerboards



TPB-3PT4-532 TPB-3PT4 - Three Phase Board & TPB-1PT3 - Single Phase Board

- 3 Phase 100A main switch
- GPO points - 10x10A, 1x15A (3 Phase)
- GPO points - 6x10A, 1x15A (Single Phase)
- 3 Phase and N active links 25mm, loop in/interconnect (3 Phase only)
- Hi visibility powder coated x15 min IP23 1.6mm steel enclosure
- Easy assembly and disassembles to flat pack for storage
- Lockable RCD cover
- Insulated lead hook
- Large insulated tie bar
- Warning labels all fitted
- 2 year warranty on replacement parts

Temporary Power Boards

Part no.	Description	Price \$
TPB-3PT4-532	Three phase powerboard with 32A 5 pin outlet	P.O.A.
TPB-3PT4	Three phase temporary powerboard	P.O.A.
TPB-1PT3	Single phase temporary powerboard	P.O.A.
TPBS-1PT4	Portable - add on (spider) temporary powerboard	P.O.A.
<i>Accessories</i>		
TPB-STAND	1600mm easy assembly site stand	P.O.A.
TPB-COVER	Safety RCD cover	P.O.A.
TPB-LEAD HOOK	Insulated lead hook	P.O.A.
TPB-LOCK	Safety lock-out padlock	P.O.A.
TPB-LABELS	AS3012 label pack	P.O.A.

Custom options – please call for details:

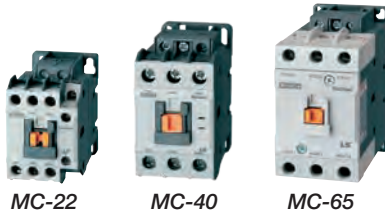
- » IP56 Switched sockets 5 pin 20A/32A
- » Lighting circuit RCBO
- » Emergency light C/W min 1 hour back up
- » Emergency stop (GPO shut off)
- » 35mm Active link set
- » Downstream isolator 100A
- » Extra 10A/15A GPO
- » Downstream isolator 63A with external connection
- » Lockable main isolator
- » Lighting test points
- » Emergency call points
- » Custom contractor signage



Please contact your distributor for pricing details.

Metasol

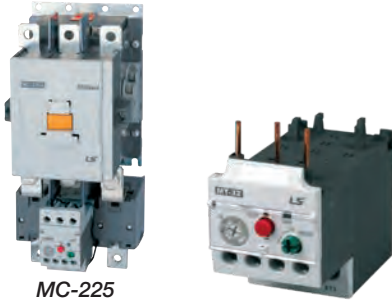
LS Metasol - Contactors Standard Frame



MC-22 MC-40 MC-65



MC-100 MC-150



MC-225 MT-32



MT-63 MT-95

Part no	415V Kw rating	AC3 rating at 415V	AC1 rating at 415V	Auxiliary contacts
MC-9B(...V)	5	9	25	1 N/O 1 N/C
MC-12B(...V)	5.5	12	25	1 N/O 1 N/C
MC-18B(...V)	7.5	18	32	1 N/O 1 N/C
MC-22B(...V)	11	22	40	1 N/O 1 N/C
MC-32A(...V)	15	32	50	2 N/O 2 N/C
MC-40A(...V)	18.5	40	60	2 N/O 2 N/C
MC-50A(...V)	22	50	70	2 N/O 2 N/C
MC-65A(...V)	30	65	100	2 N/O 2 N/C
MC-75A(...V)	37	75	110	2 N/O 2 N/C
MC-100A(...V)	55	105	160	2 N/O 2 N/C
MC-150A(...V)	75	150	210	2 N/O 2 N/C
MC-185A(...V)	90	185	230	2 N/O 2 N/C
MC-225A(...V)	132	225	275	2 N/O 2 N/C
MC-330A(...V)	160	330	350	2 N/O 2 N/C

Please enquire for availability on some larger A contactors

LS Metasol - Overloads

Part no.	Suits contactor	Setting range A	Part no.	Suits contactor	Setting range A
MT-32-0.16	MC-9B to MC-40A	0.1 - 0.16	MT-32-18	MC-9B to MC-40A	12 - 18
MT-32-0.25	MC-9B to MC-40A	0.16 - 0.25	MT-32-22	MC-9B to MC-40A	16 - 22
MT-32-0.4	MC-9B to MC-40A	0.25 - 0.4	MT-32-25	MC-9B to MC-40A	18 - 25
MT-32-0.63	MC-9B to MC-40A	0.4 - 0.63	MT-32-32	MC-9B to MC-40A	22 - 32
MT-32-1	MC-9B to MC-40A	0.63 - 1	MT-32-40	MC-9B to MC-40A	32 - 40
MT-32-1.6	MC-9B to MC-40A	1 - 1.6	MT-63-36	MC-50A to MC-65A	24 - 36
MT-32-2.5	MC-9B to MC-40A	1.6 - 2.5	MT-63-40	MC-50A to MC-65A	28 - 40
MT-32-4	MC-9B to MC-40A	2.5 - 4	MT-63-50	MC-50A to MC-65A	34 - 50
MT-32-6	MC-9B to MC-40A	4 - 6	MT-63-65	MC-50A to MC-65A	45 - 65
MT-32-8	MC-9B to MC-40A	5 - 8	MT-95-50	MC-75A to MC-100A	34 - 50
MT-32-9	MC-9B to MC-40A	6 - 9	MT-95-65	MC-75A to MC-100A	45 - 65
MT-32-10	MC-9B to MC-40A	7 - 10	MT-95-75	MC-75A to MC-100A	54 - 75
MT-32-13	MC-9B to MC-40A	9 - 13			

Phoenix Contact Surge Arrestors

Protection to AS/NZS 1768 C2, C1, B. 1 and 3 module with replaceable plug
All units come with alarm contacts. DIN mount



Part no.	Phoenix Description	Description
1105740	VAL-MS-1-50-275-A	50kA 1 module with replaceable plug and alarm contact
1105737	VAL-MS-1+1-50-275-A	50kA 1P+N , 1 module with replaceable plug and alarm contact
1105739	VAL-MS-3-50-275-A	50kA 3 module with replaceable plug and alarm contact
1105734	VAL-MS-3+1-50-275-A	50kA 3P+N , 3 module with replaceable plug and alarm contact
1106017	VAL-ME-3+1-100-275-A	100kA 3P+N , 3 module with replaceable plug and alarm contact



1105740 1105734
1105737 1106017

Plastic Load Centres

Plastic Load Centres IP42

8, 12, 18, 24 and 36 pole.

1 Unprotected and 2 protected neutral bars.

Surface mount or flush mount. IP42 protection.

Transparent or white covers. Top, bottom and rear entry.



Surface and flush mount with transparent cover. Replace 'S' with 'F' for flush mount units.

Part no.	Description
EUR8-ST E&N	8 Pole s/mount transparent MCB load centre
EUR12-ST E&N	12 Pole s/mount transparent MCB load centre
EUR18-ST E&N	18 Pole s/mount transparent MCB load centre
EUR24-ST E&N	24 Pole s/mount transparent MCB load centre
EUR36-ST E&N	36 Pole s/mount transparent MCB load centre



EUR12-ST E&N

Surface and flush mount with white cover. Replace 'S' with 'F' for flush mount units.

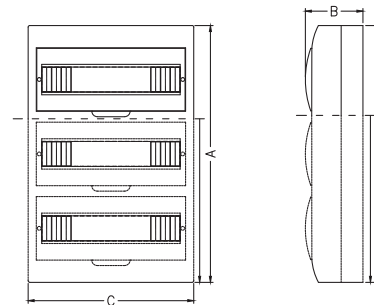
Part no.	Description
EUR8-SW E&N	8 Pole s/mount white MCB load centre
EUR12-SW E&N	12 Pole s/mount white MCB load centre
EUR18-SW E&N	18 Pole s/mount white MCB load centre
EUR24-SW E&N	24 Pole s/mount white MCB load centre
EUR36-SW E&N	36 Pole s/mount white MCB load centre



EUR24-SW E&N

Surface mounting unit dimensions

	A	B	C
EUR8-ST/W E&N	200	98	184
EUR12-ST/W E&N	200	98	256
EUR18-ST/W E&N	222	100	364
EUR24-ST/W E&N	325	102	270
EUR36-ST/W E&N	473	106	305



EUR36-SW E&N

Flush Mounted Plastic Load Centres IP42 with Metal Base

The Eureka range of plastic load centers now come complete with a metal base in the flush mounted units. With 100mm overhang above the base to help protect incoming cables, this load centre does away with the need to mount a separate metal backing plate to the flush mount enclosure.

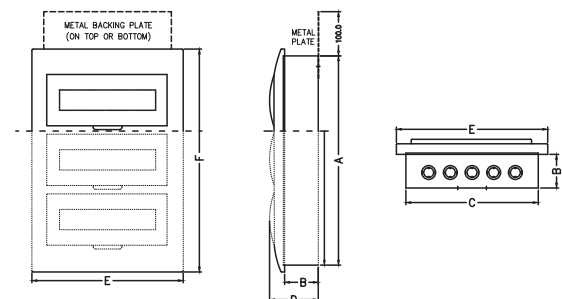
Part no.	Description
EUR12FW-M E&N	12 pole f/mount white door, metal base MCB load centre
EUR18FW-M E&N	18 pole f/mount white door, metal base MCB load centre
EUR24FW-M E&N	24 pole f/mount white door, metal base MCB load centre
EUR36FW-M E&N	36 pole f/mount white door, metal base MCB load centre



EUR18FW-M BASE

Flush mounting unit dimensions (plastic & metal base)

	A	B	C	D	E	F
EUR12-FT/W E&N	190	65	253	96	305	247
EUR12-FT/W-M E&N						
EUR18-FT/W E&N	220	75/65	362	100	413	268
EUR18-FT/W-M E&N						
EUR24-FT/W E&N	310	75/65	254	100	305	360
EUR24-FT/W-M E&N						
EUR36-FT/W E&N	470	75/65	290	100	342	502
EUR36-FT/W-M E&N						



Plastic Load Centre Accessories

Part no.	Description
EUR-STL	Load centre padlocking kit complete with padlock & 2 keys

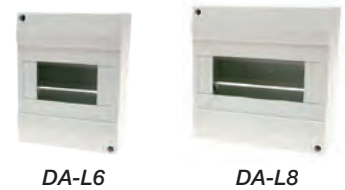


EUR-STL

Please contact your distributor for pricing details.



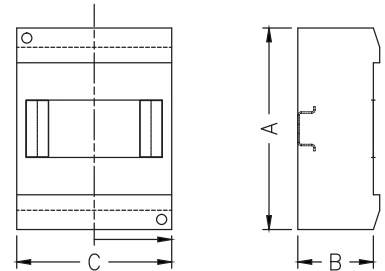
MCB Enclosures



Part no.	Description
DA-L1	1 Pole MCB enclosure
DA-L2	2 Pole MCB enclosure
DA-L4	4 Pole MCB enclosure
DA-L6	6 Pole MCB enclosure
DA-L8	8 Pole MCB enclosure
DA-L12	12 Pole MCB enclosure
DA-L18	18 Pole MCB enclosure

MCB Enclosure unit dimensions

	A	B	C
DA-L1	130	60	34
DA-L2	130	60	52
DA-L4	130	62	87
DA-L6	160	65	123
DA-L8	160	65	160
DA-L12	160	62	260
DA-L18	160	62	365



Eureka Metal Load Centres

Metal type with screw on escutcheon c/w Earth and Neutral bar arrangements
IP40. From 16 to 96 pole. Ideal for DIN mount relays or similar products
Custom made load centres available. Each row holds a maximum of 16 x 1 pole mcb's



Part no.	Height	Width	Depth	No. of rows
CM116	320	440	120	1
CM232	470	440	120	2
CM348	630	440	120	3
CM464	790	440	120	4
CM580	950	440	120	5
CM696	1110	440	120	6
CM-LOCK	Replacement push lock for CM load centres			
CM-KLOCK	Replacement key lock for CM load centres			

Weatherproof Plastic Load Centres IP55

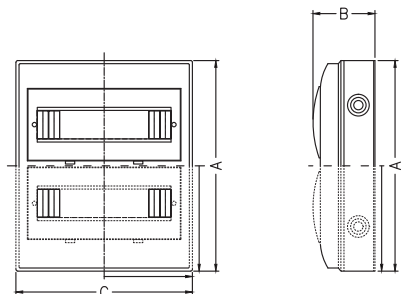
4, 8, 12, 18 and 24 pole. 1 Unprotected and 2 protected neutral bars.
Flame retardant and UV protected. Surface mount, IP55 weatherproof.
Transparent cover, top, bottom and rear entry



Part no.	Description
EUR 4ST-W IP55	4 Pole IP55 Weatherproof s/mount transparent MCB load centre
EUR 6ST-W IP55	6 Pole IP55 Weatherproof s/mount transparent MCB load centre
EUR 8ST-W IP55	8 Pole IP55 Weatherproof s/mount transparent MCB load centre
EUR 12ST-W IP55	12 Pole IP55 Weatherproof s/mount transparent MCB load centre
EUR 18ST-W IP55	18 Pole IP55 Weatherproof s/mount transparent MCB load centre
EUR 24ST-W IP55	24 Pole IP55 Weatherproof s/mount transparent MCB load centre

Weatherproof unit dimensions

	A	B	C
EUR-4ST-W IP55	215	100	126
EUR-6ST-W IP55	215	100	163
EUR-8ST-W IP55	215	100	217
EUR-12ST-W IP55	215	100	272
EUR-18ST-W IP55	235	100	380
EUR-24ST-W IP55	340	100	285



CVS Metal IP65 RAL7035 Grey Enclosures

IP65 Mild Steel Eureka Wall Mounted Enclosures RAL7035 Grey

CVS mild steel wall mounted enclosures offer a high level of quality, strength and reliability. IP65 for single & IP55 for double door enclosures.

Features include -

- » Available in RAL7035 Grey & X15 Orange
- » Complete with mounting plates (white powder coated supplied with X15 enclosures)
- » Mounting rails as standard on the inside of the door to help with mounting and wiring door mounted control gear
- » 4 welded studs for fixing the mounting plate
- » Concealed hinges provide 130 degree door opening
- » All single doors are easily reversible
- » Earthing facilities on the body, door and mounting plate
- » Double folded gutter at the front of the door frame increases rigidity and helps prevent water from entering the enclosure whilst the door is open
- » All enclosures come complete with galvanised wall mounting brackets except for EUR252010, EUR252015 and EUR252020

Material Specification -

- » Body, gland plate and the door are Polyester powder coated mild steel, 1.40 / 2.0mm
- » Mounting plate 1.5 – 2.0mm galvanised steel
- » The door has a continuous polyurethane gasket seal
- » Built to IEC 529 standards



EUR403015



EUR404020



EUR606020



EUR10010030

Part no.	Height	Width	Depth	Gland Opening	Locks	Mounting Plate Usable Dimensions	
						Height	Width
EUR252010	250	200	100	0	1	214	150
EUR252015	250	200	150	0	1	214	150
EUR252020	250	200	200	0	1	214	150
EUR302015	300	200	150	1	1	264	150
EUR302515	300	250	150	1	1	264	200
EUR302520	300	250	200	1	1	264	200
EUR303015	300	300	150	1	1	264	250
EUR303020	300	300	200	1	1	264	250
EUR403015	400	300	150	1	1	364	250
EUR403020	400	300	200	1	1	364	250
EUR404020	400	400	200	1	1	364	350
EUR406025	400	600	250	1	1	364	550
EUR504015	500	400	150	1	1	464	350
EUR504020	500	400	200	1	1	464	350
EUR504025	500	400	250	1	1	464	350
EUR505020	500	500	200	1	1	464	450
EUR505025	500	500	250	1	1	464	450
EUR604015	600	400	150	2	2	564	350
EUR604020	600	400	200	2	2	564	350
EUR605015	600	500	150	2	2	564	450
EUR604025	600	400	250	2	2	564	350
EUR605020	600	500	200	2	2	564	450
EUR605025	600	500	250	2	2	564	450
EUR606020	600	600	200	2	2	564	550
EUR606025	600	600	250	2	2	564	550
EUR606030	600	600	300	2	2	564	550
EUR705020	700	500	200	2	2	664	450
EUR705025	700	500	250	2	2	664	450
EUR806020	800	600	200	2	2	764	550
EUR806025	800	600	250	2	2	764	550
EUR806030	800	600	300	2	2	764	550
EUR808020	800	800	200	2	2	764	750
EUR808025	800	800	250	4	2	764	750
EUR808030	800	800	300	4	2	764	750
EUR1006025	1000	600	250	2	2	964	550
EUR1006030	1000	600	300	2	2	964	550
EUR1008025	1000	800	250	2	2	964	750
EUR1008030	1000	800	300	4	2	964	750
#EUR10010030	1000	1000	300	4	2	964	950
#EUR1206025	1200	600	250	2	2	1165	550
EUR1208030	1200	800	300	4	2	1164	750
#EUR12010030	1200	1000	300	4	2	1164	950
#EUR1408030	1400	800	300	2	2	1364	750
#EUR14010030	1400	1000	300	2	2	1364	950
#EUR14012030	1400	1200	300	2	2	1364	1150

Double door enclosure

Please contact your distributor for pricing details.



IP65 Mild Steel Eureka Wall Mounted Enclosures X15 Orange

Supplied with white powder coated mounting plates



EUR604020OR

Part no.	Height	Width	Depth	Gland Opening	Locks	Usable dimensions	
						Height	Width
EUR404020-OR	400	400	200	1	1	364	250
EUR604020-OR	600	400	200	2	1	564	350
EUR604025-OR	600	400	250	2	2	564	350
EUR606020-OR	600	600	200	2	1	564	564
EUR606025-OR	600	600	250	2	2	564	564
EUR705025-OR	700	500	250	2	1	664	450
EUR806025-OR	800	600	250	2	2	764	550
EUR1006025-OR	1000	600	250	2	2	964	550
EUR1006030-OR	1000	600	300	2	2	964	550
EUR1008025-OR	1000	800	250	2	2	964	750
EUR1008030-OR	1000	800	300	4	2	964	750
EUR1206025-OR	1200	600	250	2	2	1164	550
EUR1208025-OR	1200	800	250	4	2	1164	750
EUR1208030-OR	1200	800	300	4	2	1164	750
EUR1408030-OR	1400	800	300	2	2	1364	750

IP65 Stainless Steel Wall Mounted Enclosures

Made of stainless steel, surface hairline finished in either Grade SS304 / SS316

Features include -

Complete with mounting plate (galvanised steel), bottom gland plate and plastic lock.
Enclosure body folded and welded from single piece material for maximum protection.
Double folded gutter at door frame to increase rigidity and prevents water from entering while door is open. A continuous seal of polyurethane gasket at door provides IP protection.
Concealed hinges provide 130° door opening. Earthing facilities on body, door and mounting plate.

Material Specification -

Body & door - 1.5 to 2.0mm SS304 / SS316

Mounting plate - 1.5 to 2.0mm galvanised steel

Optional accessories are the same as the mild steel wall mounted enclosure range, but in stainless steel for rain hood canopies only

* some accessories may be indent please enquire for ordering details

304 Stainless Steel



CRX403015

Part no.	Height	Width	Depth	Gland Opening	Locks	Mounting Plate Usable Dimensions	
						Height	Width
CRX252015	250	200	150	0	1	214	150
CRX302515	300	250	150	1	1	264	200
CRX303015	300	300	150	1	1	264	250
CRX403015	400	300	150	1	1	364	250
CRX403020	400	300	200	1	1	364	250
CRX404020	400	400	200	1	1	364	350
CRX504020	500	400	200	1	2	464	350
CRX604030	600	400	300	1	2	564	350
CRX606025	600	600	250	1	2	564	550
CRX705025	700	500	250	1	2	664	450
CRX806030	800	600	300	1	2	764	550
CRX808030	800	800	300	1	2	764	750
CRX1008030	1000	800	300	2	2	964	750
CRX1208030	1200	800	300	2	2	1164	750
EUR-CRX-WMB	SS304 Wall mount brackets - set of 4						

316 Stainless Steel

Part no.	Height	Width	Depth	Gland Opening	Locks	Mounting Plate Usable Dimensions	
						Height	Width
CRXX303015	300	300	150	1	1	264	250
CRXX403020	400	300	200	1	1	264	250
CRXX404020	400	400	200	1	1	364	350
CRXX604030	600	400	300	1	2	364	350
CRXX606025	600	600	250	1	2	564	550
CRXX806030	800	600	300	1	2	764	550
CRXX1008030	1000	800	300	2	2	964	750
CRXX1208030	1200	800	300	2	2	1164	750

CVS Enclosure Accessories

Wall Mounted Enclosure Accessories

The CVS range of enclosures have a full range of accessories available. Rain hood canopies are available in both RAL7035 and X15 color options. The inner door is mounted via the gear tray bolts and requires the correct length standoff brackets suited to your depth of enclosure.

For example - ordering inner door for a EUR606030 enclosure:

Inner doors require 1 inner door and 1 set of stand off brackets –
 Part 1 - the inner door with hinges and lock. ie: EUR-CVS IDK6060
 Part 2 - the standoff brackets - chosen depending depth of enclosure used. ie: EUR-CVS SOB300
 * Some accessories may be indent please enquire for ordering details
 Please enquire for plinths and transparent door kits.



Inner Door

Easily adapted into the Mild Steel & Stainless Steel range of CVS enclosures.

Part no.	Description
EUR-CVS IDK4040	Inner door suited to all 400 H x 400 W enclosures
EUR-CVS IDK5050	Inner door suited to all 500 H x 500 W enclosures
EUR-CVS IDK6040	Inner door suited to all 600 H x 400 W enclosures
EUR-CVS IDK6060	Inner door suited to all 600 H x 600 W enclosures
EUR-CVS IDK7050	Inner door suited to all 700 H x 500 W enclosures
EUR-CVS IDK8060	Inner door suited to all 800 H x 600 W enclosures
EUR-CVS IDK8080	Inner door suited to all 800 H x 800 W enclosures
EUR-CVS IDK10060	Inner door suited to all 1000 H x 600 W enclosures
EUR-CVS IDK10080	Inner door suited to all 1000 H x 800 W enclosures
EUR-CVS IDK12080	Inner door suited to all 1200 H x 800 W enclosures
EUR-CVS IDK100100	Inner door suited to all 1000 H x 1000 W double door enclosures
EUR-CVS IDK120100	Inner door suited to all 1200 H x 1000 W double door enclosures



INNER DOOR FITTED



EUR-CVS SOB250

Stand Off Brackets To Suit Inner Doors

Part no.	Description
EUR-CVS SOB200	Inner door mounting brackets for enclosure depth 200mm (4 pkt)
EUR-CVS SOB250	Inner door mounting brackets for enclosure depth 250mm (4 pkt)
EUR-CVS SOB300	Inner door mounting brackets for enclosure depth 300mm (4 pkt)

Rain Hood Canopy

Part no.	Description
EUR-CVS RH5025	Rain hood canopy for 500 W x 250 D enclosure
EUR-CVS RH6025	Rain hood canopy for 600 W x 250 D enclosure
EUR-CVS RH6030	Rain hood canopy for 600 W x 300 D enclosure
EUR-CVS RH7025	Rain hood canopy for 700 W x 250 D enclosure
EUR-CVS RH8025	Rain hood canopy for 800 W x 250 D enclosure
EUR-CVS RH8030	Rain hood canopy for 800 W x 300 D enclosure
EUR-CVS RH10030	Rain hood canopy for 1000 W x 300 D enclosure
EUR-CVS RH12030	Rain hood canopy for 1200 W x 300 D enclosure

For X15 Orange, add '-OR' to Part No.



RAIN HOOD CANOPY FITTED

Internal DIN Mount Modular Chassis

Internal door chassis help with the easy mounting of din components into a standard enclosure. Each frame comes complete with removable internal escutcheon and is easily adaptable into the mild steel and stainless steel range of CVS wall mount enclosure.

Part no.	Description
EUR-MC3252	2 rows of 9 pole modules to suit EUR302520 enclosure
EUR-MC432	2 rows of 12 pole modules to suit EUR403020 enclosure
EUR-MC542	3 rows of 16 pole modules to suit EUR504020 enclosure
EUR-MC642	3 rows of 16 pole modules to suit EUR604020 enclosure
EUR-MC652	4 rows of 22 pole modules to suit EUR605020 enclosure
EUR-MC752	4 rows of 22 pole modules to suit EUR705020 enclosure



EUR-MC542



Economy Terminals

From 2.5 to 70mm. Includes earth terminals, jumper bars. DIN rail mount. Grey, red and blue in 4mm

Terminals

Part no.	Description
ATB-2.5	2.5mm terminal
ATB-4	4mm terminal
ATB-4R	4mm red terminal
ATB-4B	4mm blue terminal
ATB-6	6mm terminal
ATB-10	10mm terminal
ATB-16	16mm terminal
ATB-35	35mm terminal
ATB-70	70mm terminal

* 70mm Terminal is double sided protected (does not require end cap)

Earth Terminals

Part no.	Description
ATE-4	4mm earth terminal
TBE-6E	6mm earth terminal
ATE-10	10mm earth terminal
ATE-16	16mm earth terminal

Terminal End Caps

Part no.	Description
EC4	2.5mm and 4mm end plate
EC6	6mm end plate
EC10	10mm end plate
EC16	16mm end plate
EC35	35mm end plate

Terminal End Clamps

Part no.	Description
ESI	DIN and G rail clamp
2005.2	DIN rail clamp



ATE-4



EC4



EC16

Terminals, Slotted Duct & Service Fuses

Bi Metal Terminals

Suitable for joining between copper and aluminium cables

Compact in size, pre-greased with anti-oxidation compound, can be DIN mounted or base mounted

Great to use as incoming terminal block to avoid using Bi metal lugs.

Housing constructed from Polyamide material and body/screws constructed from Tin-coated Aluminium.

Nominal voltage rating at 750V and amps 160A-425A

Part no.	Suits cables		Color	A rating	
	Copper	Aluminium		Copper	Aluminium
KE61	2.5-50mm ²	6-50mm ²	grey	160	145
KE61.2	2.5-50mm ²	6-50mm ²	blue	160	145
KE61.3	2.5-50mm ²	6-50mm ²	gr/yellow	160	145
KE61.03	2.5-50mm ²	2.5-50mm ²	grey	160	145
KE62	16-95mm ²	16-95mm ²	grey	245	220
KE62.2	16-95mm ²	16-95mm ²	blue	245	220
KE62.3	16-95mm ²	16-95mm ²	gr/yellow	245	220
KE63	35-150mm ²	35-150mm ²	grey	320	290
KE63.2	35-150mm ²	35-150mm ²	blue	320	290
KE63.3	35-150mm ²	35-150mm ²	gr/yellow	320	290
KE64	35-240mm ²	35-240mm ²	grey	425	380
KE64.2	35-240mm ²	35-240mm ²	blue	425	380
KE64.3	35-240mm ²	35-240mm ²	gr/yellow	425	380

Eureka*



KE61.4

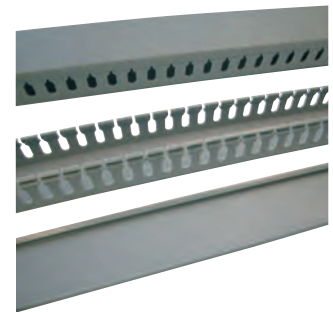


KE63

Slotted Duct

Supplied in 2m lengths. Open slotted. Grey in colour. Pre-scored for easy snap off.

Part no.	W x H (mm)	Box Qty.	Part no.	W x H (mm)	Box Qty.
CSD 2525	25 x 25	12	CSD 6040	60 x 40	12
CSD 2530	25 x 30	12	CSD 6060	60 x 60	12
CSD 2540	25 x 40	12	CSD 7575	75 x 75	12
CSD 2550	25 x 50	12	CSD 70100	70 x 100	12
CSD 2560	25 x 60	12	CSD 6080	60 x 80	12
CSD 2575	25 x 75	12	CSD 8060	80 x 60	12
CSD 2580	25 x 80	12	CSD 8080	80 x 80	8
CSD 4040	40 x 40	12	CSD 80100	80 x 100	8
CSD 4060	40 x 60	12	CSD 10060	100 x 60	8
CSD 4080	40 x 80	12	CSD 10080	100 x 80	8
CSD 5050	50 x 50	12	CSD 100100	100 x 100	8
CSD 5075	50 x 75	12			



Service Fuses

Back wired. 100A Rated.

Part no.	Description
EUR-HSF22BW	100A back wired service fuse. For Victorian use
HSBBW	100A back wired service fuse. For NSW use
100LR85	Fuse to suit HSBBW
AN250V	Neutral link 2 x 35mm, 2 x 25mm angled main terminal

* Please enquire for fuse links to suit



EUR-HSF22BW



TLY2



TMY4



G2R-1-SNI



P2RF-08-E



EUR-TLM-20



PL22/...

Square & Flat Pin With LED & Test Button

2 pole 10A, 4 pole 5A, bases are DIN rail mounted.

Available in 12VAC, 12VDC, 24VAC, 24VDC, 110VAC & 240VAC

Part no.	Description	No. of Pins
TLY2-12VACLT	2 pole 10A 12 VAC	8
TLY2-12VDCLT	2 pole 10A 12 VDC	8
TLY2-24VACLT	2 pole 10A 24 VAC	8
TLY2-24VDCLT	2 pole 10A 24 VDC	8
TLY2-110VACLT	2 pole 10A 110 VAC	8
TLY2-240VACLT	2 pole 10A 240 VAC	8
TMY4-12VACLT	4 pole 5A 12 VAC	14
TMY4-12VDCLT	4 pole 5A 12 VDC	14
TMY4-24VACLT	4 pole 5A 24 VAC	14
TMY4-24VDCLT	4 pole 5A 24 VDC	14
TMY4-110VACLT	4 pole 5A 110 VAC	14
TMY4-240VACLT	4 pole 5A 240 VAC	14

Bases To Suit Square & Flat Pin Relays

Part no.	Description	No. of Pins
PTF-08I	2 pole 10A (IZUMI)	8
NDSQ-14	4 pole 5A (IZUMI)	14

Slimline Relays With Test Button

Part no.	Voltage	No of poles	Contact arrangement	Amps
G2R-1-SNI 24VAC	24V AC	1	SPDT	10A
G2R-1-SNI 24VDC	24V DC	1	SPDT	10A
G2R-1-SNI 240VAC	240V AC	1	SPDT	10A
G2R-1-SNI 12VAC	12V AC	1	SPDT	10A
G2R-2-SNI 24VAC	24V AC	2	DPDT	5A
G2R-2-SNI 24VDC	24V DC	2	DPDT	5A
G2R-2-SNI 240VAC	240V AC	2	DPDT	5A
G2R-2-SNI 12VAC	12V AC	2	DPDT	5A

Slimline Relay Bases

Part no.	Description
P2RF-05-E	Relay base, screwed terminal to suit 1 pole G2R-1... slim line relay
P2RF-08-E	Relay base, screwed terminal to suit 2 pole G2R-2... slim line relay

Lamp Test Diode Blocks

Part no.	Description
EUR-TLM-20	Diode block for testing maximum of 20 lamps

Economy LED Indicator Lights

24VAC/DC or 240VAC. Also available in 12VAC/DC. Operational temperature -25° to 55° C.

Cluster type LED illumination. Red, green, blue, amber, white. Life - 60,000hrs plus.

22mm. Insulation resistance > 2 M ohm. IP65

Part no.	Colour	Voltage	Size
PL22/24R	red	24VAC/DC	22mm
PL22/24G	green	24VAC/DC	22mm
PL22/24B	blue	24VAC/DC	22mm
PL22/24A	amber	24VAC/DC	22mm
PL22/24W	white	24VAC/DC	22mm
PL22/240R	red	240V AC	22mm
PL22/240G	green	240V AC	22mm
PL22/240B	blue	240V AC	22mm
PL22/240A	amber	240V AC	22mm
PL22/240W	white	240V AC	22mm

Current Sensing Relays, Cam Switches & Transformers

Current Sensing Relays

Monitors current from 0.25A - 50A. Output range: from 1A relay analogue outputs of 0-5VDC, 0-10VDC and 4-20mA. Other models available.

Part no.	Description
SEN C 1200	Mini solid core go/no go 0.25A-50A range. 1A at 30VAC/DC man N/O.
SEN C 1203	Mini solid core analogue 0A-15A fixed range. 0-5VDC

Cam Switches

Special purpose switches available on request. Angled terminals allow for easy fit-off. Individual front plates made to order. Please enquire for other mounting styles.

On / Off Main Switches IP65

Part no.	Description
T0-1-8200/E	1 pole, 20A panel mount on/off
T0-2-1/E	3 pole, 20A panel mount on/off
P1-32/E	3 pole, 32A panel mount on/off
T0-1-8200/EZ	1 pole, 20A centre mount on/off
T0-2-1/EZ	3 pole, 20A centre mount on/off
P1-32/EZ	3 pole, 32A centre mount on/off

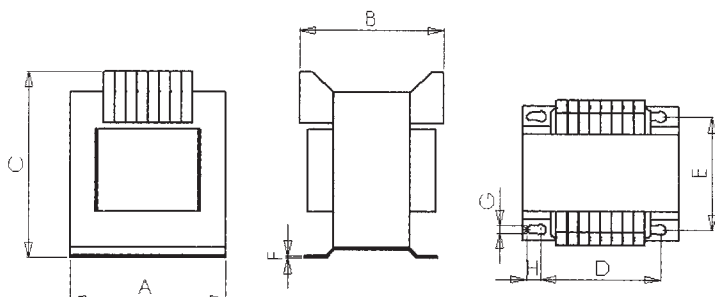
Change Over Switches with Centre Off Position IP65

Part no.	Description
T0-1-8210/E	1 pole, 20A panel mount auto-off-manual
T0-3-8212/E	3 pole, 20A panel mount auto-off-manual
T0-1-8210/EZ	1 pole, 20A centre mount auto-off-manual
T0-3-8212/EZ	3 pole, 20A centre mount auto-off-manual

Standard Transformers

Manufactured to AS / NZS 61558. Input voltage 240VAC +/- 5%. Output voltage 24VAC Frequency 50/60Hz. Rating 20VA - 800VA. Temperature rise 60 deg C +5% / -5% voltage compensation on primary terminals, eg: 228V / 240V / 252V. All transformers supplied in a cardboard box with foam inserts for transporting.

Part no.	VA Rating	A	B	C	D	E	F	G	H	Kg
T20-240-24	20	78	72	95	56	46	1.2	4.6	8	1.4
T40-240-24	40	78	72	95	56	46	1.2	4.6	8	1.4
T63-240-24	63	78	72	95	56	46	1.2	4.6	8	1.5
T100-240-24	100	85	75	98	64	62	1.5	4.6	8	1.9
T160-240-24	160	96	92	110	84	74	1.5	5.8	10	2.5
T250-240-24	250	96	100	110	84	85	1.5	5.8	10	3.4
T400-240-24	400	120	100	130	90	85	2	5.8	10	5.6
T630-240-24	630	120	110	155	122	90	2	7	14	8.4
T800-240-24	800	120	130	155	122	105	2	7	14	9.5



Eureka*



SEN C 1200



E STYLE



EZ STYLE



T250-240-24



Automatic Transfer Switches

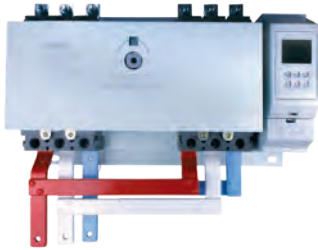
The Eureka Automatic transfer switch is a solid, robust unit, with integral functions to enable safe and reliable switching of power supplies in the critical moments of mains power loss. At the time of loss of the mains power supply, the unit will operate to IEC60974-6-1 International standards.

With a reliable mechanical interlock device which operates between both the mains and back up power supplies, this avoids the possibility of two MCCB's closing at the same time. The Eureka ATS includes built in phase fail protection and the ability to operate in fire mode. This unit has all of the features required by a back up supply switching unit.

Overload protection, over and under voltage and short circuit protection are all included in the logic of each ATS unit.

Features include:

- » Units range from 40A to 800A in 3 pole / 3 pole across 3 different frame sizes .
- » All units use electronic circuit breakers from the LS Susol range
- » All units are available from 50-85kA short circuit capacity
- » Phase fail protection
- » Fire mode operation
- » Able to operate in both Automatic and Manual mode
- » Controller display can be remotely mounted with 2m extension cable
- » Can be connected via RS485 to a BMS unit
- » Unit can be connected to the fire indication panel
- » Comes complete with load side commoning bars and spreader tags for larger incoming cable connection
- » Mechanical operation x 10,000 times
- » All units come with a detailed operation and instruction manual



EUR-ATS 250A 3P-3P



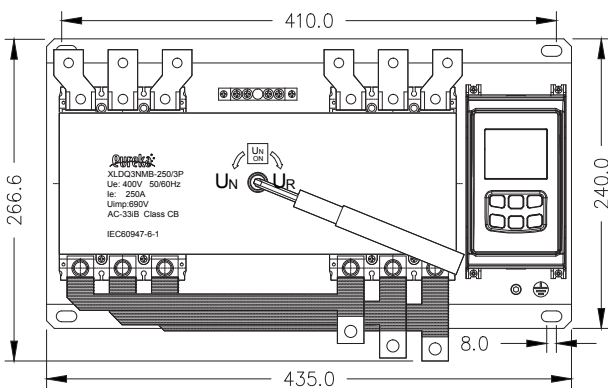
EUR-ATS 630A 3P-3P



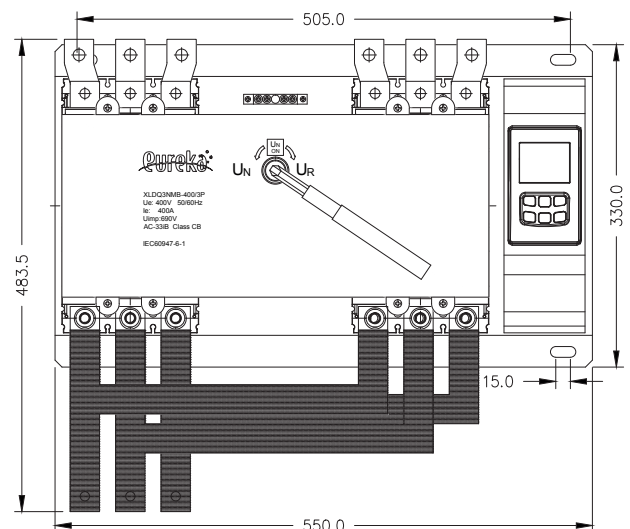
ATS CONTROLLER

Part no.	Description
EUR-ATS 100A 3P-3P	40-100A electronic MCCB, 3 pole / 3 pole 50kA with logic controller
EUR-ATS 160A 3P-3P	64-160A electronic MCCB, 3 pole / 3 pole 50kA with logic controller
EUR-ATS 250A 3P-3P	100-250A electronic MCCB, 3 pole / 3 pole 50kA with logic controller
EUR-ATS 400A 3P-3P	160-400A electronic MCCB, 3 pole / 3 pole 50kA with logic controller
EUR-ATS 630A 3P-3P	252-630A electronic MCCB, 3 pole / 3 pole 50kA with logic controller
EUR-ATS 800A 3P-3P	320-800A electronic MCCB, 3 pole / 3 pole 50kA with logic controller

EUR-ATS 100/160/250



EUR-ATS 400/630



Automatic Transfer Switches



XLS3 Series Automatic Transfer Switches

Features -

- 3 frame sizes from 125 - 630A
- 4 pole (3 pole available)
- Internal load side commoning bars
- LED operation screen can be unit mounted or door mounted via external mounting cable
- Internal mechanical operation
- Rated working voltage 440VAC
- Rated short time withstand current 10kA (25kA xls3-630) 200mS
- Switching category AC-33B
- Control supply voltage 230VAC / 50hZ
- Contact transfer time < 2 sec

Size and dimensions

- XLS3-125 – 245w x 130h x 122d, 5kg
- XLS3-250 – 295w x 175h x 175d, 10kg
- XLS3-630 – 430w x 272h x 228d, 20kg

Functions list-

- » Auto transfer - Auto recovery / Auto transfer - no Auto recovery / Generator only
- » Manual transfer - Manual main power / Manual back-up power
- » Padlockable in OFF position
- » Remote generator start and stop signal
- » N/O contact for fire pump control
- » 3 phase adjustable over voltage control from 240-290VAC
- » 3 phase adjustable under voltage control 150-200VAC
- » 3 phase monitoring control
- » Adjustable transfer / recovery / Generator start / stop switching time delay 0-300s



XLS3-250C4P

Part no.	Description
XLS3-125C4P	4pole 125A Automatic Transfer Switch with logic controller
XLS3-250C4P	4pole 250A Automatic Transfer Switch with logic controller
XLS3-630C4P	4pole 630A Automatic Transfer Switch with logic controller

Please enquire for enclosed units

XLDQ3NX Series Automatic Transfer Switch

Features -

- Compact construction and easy operation
- LED indication for status operation
- Uses 2 x 4 pole 18mm MCB from 6-63A
- Rated voltage 150-265VAC
- Available in 3 pole and 1 phase as well (please enquire)
- Overload and short circuit protection
- Internal mechanical operation

Functions list-

- » Three position - mains power / OFF / Generator power
 - » Transfer delay adjustable from 0-30 sec
 - » Switching category AC33iB
 - » Auto and manual mode
 - » Remote generator start and stop signal
 - » N/O contact for fire pump control
- * Please select A rating when ordering



XLDQ3NX-D

Part no.	Description
XLDQ3NX-D-..*	4pole 63A Auto Transfer Switch with remote generator start

Please enquire for enclosed units

Cascading (Back-up) at 415VAC

In accordance with the requirements of **AS/NZ3000:2007** the following table provides the Ka value of a downstream breaker or breakers when applied to a circuit with the stated upstream breaker value. The upstream breaker limits the current to the downstream breaker(s) in the event of a short circuit to ensure that the downstream breaker operates normally. The values are based on both calculations for known thermal stress capability of the individual breakers as well as verification by testing.

Upstream		Susol	TS100N	TS100H	TS100L	TS160N	TS160H	TS160L
Rated breaking capacity Ka			50	85	150	50	85	150
Downstream		Rated brk. cap. Ka	Enhanced breaking capacity Ka					
Eureka DIN	LSBS	6	30+	30+	30+	30+	30+	30+
	LSBE	10	30+	30+	30+	30+	30+	30+
	LSBE	10	40+	50+	50+	50+	50+	50+
	BKH	10	25+	25+	25+	25+	25+	25+
LS Susol	TS100N	50		85	150		85	150
	TS100H	85			150			150
	TS160N	50				85	150	
	TS160H	85					150	
Upstream		Susol	TS250N	TS250H	TS250L	TS400N	TS400H	TS400L
Rated breaking capacity Ka			50	85	150	65	85	150
Downstream		Rated brk. cap. Ka	Enhanced breaking capacity Ka					
Eureka DIN	LSBS	6	30+	30+	30+			
	LSBE	10	40+	40+	40+			
	LSBE	10	30+	30+	30+			
	BKH	10	25+	25+	25+			
LS Susol	TS100N	50		85	150	65	85	150
	TS100H	85			150			150
	TS160N	50		85	150	65	85	150
	TS160H	85			150			150
	TS250N	50		85	150	65	85	150
	TS250H	85			150			150
	TS400N	65					85	150
	TS400H	85						150
Upstream		Susol	TS630N	TS630H	TS630L	TS800N	TS800H	TS800L
Rated breaking capacity Ka			65	85	150	65	100	150
Downstream		Rated brk. cap. Ka	Enhanced breaking capacity Ka					
LS Susol	TS100N	50	65	85	150	65	100	150
	TS100H	85			150		100	150
	TS160N	50	65	85	150	65	100	150
	TS160H	85			150		100	150
	TS250N	50	65	85	150	65	100	150
	TS250H	85			150		100	150
	TS400N	65		85	150		100	150
	TS400H	85			150		100	150
	TS630N	65		85	150		100	150
	TS630H	85			150		100	150
	TS800N	65					100	150
	TS800H	100						150

Information in the above aforementioned tables has been developed in conjunction with LSIS.

Cascading (Back-up) & Enhanced Discrimination at 415VAC

The following table details the Ka takeover value (left hand side value) of the upstream circuit breaker when applied in a circuit with the stated downstream breaker in the event of a short circuit. The right hand value is the enhanced downstream breaker capacity when backed up by the stated upstream breaker. Total discrimination can be expected in the event of a short circuit for all combinations in the shaded columns. That is the downstream breaker should clear the fault without tripping the upstream breaker up to the enhanced breaking capacity.

Enhanced take over value —> 15/30 <— Downstream breaker enhanced breaking capacity

Upstream circuit breaker : Susol TS160 to TS250. Downstream circuit breaker : Eureka LSB range.

Upstream		TS160N/H/L				TS250/N/H/L		
		50/85/150kA TM-FMU				50/85/150kA TM-ATU		
Downstream	Trip Unit Rating	80	100	125	160	160	200	250
LSBS	< = 16	30/30+	30/30+	30/30+	30/30+	30/30+	30/30+	30/30+
	20-25	30/30+	30/30+	30/30+	30/30+	30/30+	30/30+	30/30+
	32-40	15/30	30/30+	30/30+	30/30+	30/30+	30/30+	30/30+
	50	15/30	30/30+	30/30+	30/30+	30/30+	30/30+	30/30+
	63		30/30+	30/30+	30/30+	30/30+	30/30+	30/30+
LSBE	< = 16	50/50	50/50+	50/50+	50/50+	40/40+	40/40+	40/40+
	20-25	50/50	50/50+	50/50+	50/50+	40/40+	40/40+	40/40+
	32-40	15/50	50/50+	50/50+	50/50+	40/40+	40/40+	40/40+
	50	15/40	40/40+	40/40+	40/40+	30/30+	30/30+	30/30+
	63		40/40+	40/40+	40/40+	30/30+	30/30+	30/30+
BKH	63		2.5/25	2.5/25	2.5/25	25/25+	25/25+	25/25+
	80		2.5/25	2.5/25	2.5/25	25/25+	25/25+	25/25+
	100				2.5/25	25/25+	25/25+	25/25+
	125					25/25+	25/25+	25/25+
		Electronic ETS						
Downstream	Trip Unit Rating	100		160		250		
LSBS	< = 25	40/40+		40/40+		40/40+		
	32-40	6/40		40/40+		40/40+		
	50-63			40/40+		40/40+		
LSBE	< = 25	40/40		50/50+		40/40+		
	32-40	10/40		50/50+		40/40+		
	50-63			50/50+		40/40+		
BKH	63			2.5/25		25/25+		
	80			2.5/25		25/25+		
	100					10/25		
	125							



ABC Series Products

The FR and CS range of special application sensors are designed to solve specific installation issues found in today's modern buildings. These products are especially designed with the installation team in mind - with each product being made for ease of installation and commissioning. All FR and CS series products can be customised by you on site or at the design stage for your specific application. Please call your local distributor to discuss your site specific requirements.

ABC FR3

Current monitor & timer

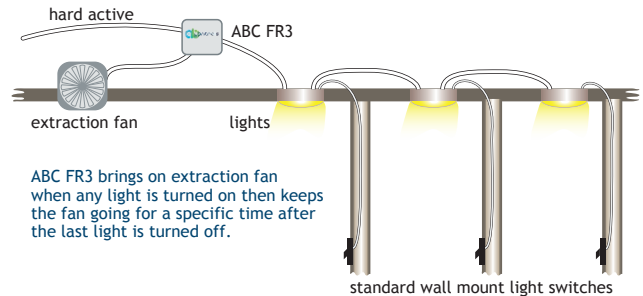
The ABC FR3, an Australian designed and made product, is a very versatile current sensor, delay off timer (10 minutes maximum adjustable) and 5 Amp (inductive) power relay in one small unit. It is designed to monitor the current (amps) used on a 240V AC circuit and operates the internal 5 Amp (ind) power relay when the monitored circuit draws current, initialising a 0-10min adjustable off-delay timer.

ABC FR3 options

Other versions are available on request to suit your needs. Call us to discuss your requirements and we can recommend the best alternative for the situation or, in some instances, create a new one.

ABC FR3 Specifications

- Operation voltage 220 to 240 VACMax
- Total Load current 10 Amps Max
- Relay switching current 10 Amps (res) 5 Amp (ind)-AC3
- Timer range ABC FR3 0 to 10 min adjustable

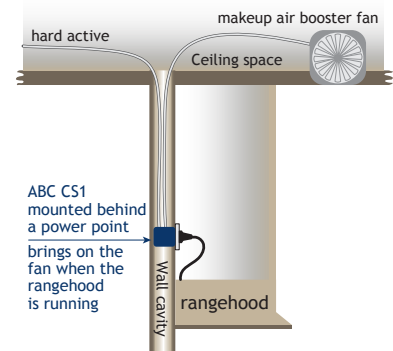


ABC-CS1 Series

Current monitoring relay

This new range of compact current sensors have many varied uses. They will monitor a 240vac load and switch a second load when current is detected. Because it doesn't need the timing facility of the FR3 series, its small size makes it easier to install than ever before.

The ABC CS1 can be purchased as a standalone PCB, small enough to mount in a standard electrical Jbox or in a pre-wired enclosure as shown.



Please contact your local distributor for pricing and any technical details or requirements.



98 Commercial Drive, Thomastown VIC 3074
Ph (03) 9464 6555 Fax (03) 9464 5155
Email sales@navcontrols.com.au
www.navcontrols.com.au



2C Brunner Road, Chullora NSW 2190
Ph 1300 TOBINS, (02) 8713 5200 Fax (02) 9790 5211
Email sales@tobins.com.au
www.tobins.com.au



27A Colin Jamieson Drive, Welshpool WA 6106
Ph 08 9451 4782 Fax 08 9451 7057
Email sales@uniquip.net.au
www.uniquip.net.au



31 Sunderland Street, Moonah TAS 7009
Ph (03) 6273 4455 Fax (03) 6273 4734
www.gordonwood.net.au



1/12 Northern Link Circuit,
Shaw, Townsville, QLD 4818
Ph (07) 4412 6888 Mob 0402 916 341
www.ppiindustries.com.au